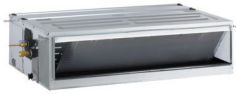


STANDARD INVERTER (R32)

MID STATIC PRESSURE

- UM36F / UM42F / UM48F / UM60F



LG participates in the ECP programme for EUROVENT AC program.
Check ongoing validity of certification
: www.eurovent-certification.com

UUD1 U30



CEILING CONCEALED DUCT

| COMBINATION | | | | 36 | 42 | 48 | 60 |
|-------------------------------------|--------------------------------|---------------------|---------------------------|--------------------|--------------------|--------------------|--------------------|
| Capacity | Cooling | Min. / Rated / Max. | kW | 3.8 / 9.5 / 12.5 | 4.8 / 12.0 / 14.0 | 5.4 / 13.4 / 15.7 | 5.8 / 14.6 / 15.8 |
| | Heating | Min. / Rated / Max. | kW | 4.3 / 10.8 / 13.4 | 5.4 / 13.5 / 15.8 | 6.2 / 15.5 / 17.5 | 6.7 / 16.8 / 18.1 |
| Power Input (Set) | Cooling | Min. / Rated / Max. | kW | 0.50 / 2.50 / 3.80 | 0.70 / 3.48 / 4.52 | 0.90 / 4.32 / 5.62 | 1.00 / 4.95 / 5.54 |
| | Heating | Min. / Rated / Max. | kW | 0.60 / 2.77 / 3.77 | 0.80 / 3.74 / 4.86 | 0.90 / 4.31 / 5.26 | 0.90 / 4.60 / 5.29 |
| Running Current | Cooling | Rated | A | 11.1 | 15.3 | 19.0 | 21.6 |
| | Heating | Rated | A | 12.6 | 16.4 | 18.4 | 20.4 |
| EER / COP | | | kWh / kWh | 3.80 / 3.90 | 3.45 / 3.61 | 3.10 / 3.60 | 2.95 / 3.65 |
| SEER / SCOP | | | kWh / kWh | 5.80 / 3.90 | 5.60 / 3.90 | 5.80 / 4.00 | 5.60 / 4.00 |
| Pdesign | Cooling @ 35°C | | kW | 9.5 | 12.0 | 13.4 | 14.6 |
| | Heating @ -10°C | | kW | 9.5 | 9.5 | 9.5 | 9.5 |
| Seasonal Energy Label | Cooling / Heating | | - | A+ / A | A+ / A | - / - | - / - |
| Annual Energy Consumption | Cooling / Heating | | kWh | 573 / 3,410 | 750 / 3,410 | 1,386 / 3,325 | 1,564 / 3,325 |
| Dehumidification Rate | | | l/h | 2.9 | 4.4 | 4.8 | 4.7 |
| ODU Sound Pressure Level | Cooling / Heating | Rated | dB(A) | 50 / 50 | 51 / 52 | 52 / 53 | 54 / 54 |
| ODU Sound Power Level | Cooling | Rated | dB(A) | 66 | 69 | 69 | 71 |
| Piping Connections | Liquid | | mm (inch) | Ø9.52 (3/8) | Ø9.52 (3/8) | Ø9.52 (3/8) | Ø9.52 (3/8) |
| | Gas | | mm (inch) | Ø15.88 (5/8) | Ø15.88 (5/8) | Ø15.88 (5/8) | Ø15.88 (5/8) |
| | Connections Method | | - | Flared | Flared | Flared | Flared |
| Operation Range (Outdoor) | Cooling | Min. / Max. | °C | -20 / 52 | -20 / 52 | -20 / 52 | -20 / 52 |
| | Heating | Min. / Max. | °C | -25 / 18 | -25 / 18 | -25 / 18 | -25 / 18 |
| INDOOR | | | | UM36F N20 | UM42F N20 | UM48F N30 | UM60F N30 |
| Power Supply | | | Ø / V / Hz | 1 / 220-240 / 50 | 1 / 220-240 / 50 | 1 / 220-240 / 50 | 1 / 220-240 / 50 |
| Power Input (IDU) | | H / M / L | W | 183 / 134 / 101 | 266 / 200 / 145 | 242 / 159 / 124 | 342 / 287 / 242 |
| Air Flow Rate | | H / M / L | m ³ /min | 32 / 28 / 24 | 38 / 33 / 28 | 40 / 34 / 28 | 50 / 45 / 40 |
| Dimensions | Body | W x H x D | mm | 1,250 x 270 x 700 | 1,250 x 270 x 700 | 1,250 x 360 x 700 | 1,250 x 360 x 700 |
| Weight | Body | | kg | 38.5 | 38.5 | 43.5 | 43.5 |
| Sound Pressure Level | Cooling | H / M / L | dB(A) | 36 / 34 / 33 | 38 / 36 / 34 | 39 / 38 / 36 | 42 / 40 / 39 |
| Sound Power Level | Cooling | Max. | dB(A) | 60 | 62 | 65 | 66 |
| Piping Connections | Drain (Natural Drainage) | O.D. / I.D. | mm | Ø25.4 / 19.4 | Ø25.4 / 19.4 | Ø25.4 / 19.4 | Ø25.4 / 19.4 |
| | Drain (Using Drain Pump) | O.D. / I.D. | mm | Ø32.0 / 26.0 | Ø32.0 / 26.0 | Ø32.0 / 26.0 | Ø32.0 / 26.0 |
| OUTDOOR | | | | UUD1 U30 | | | |
| Power Supply | | | Ø / V / Hz | 1 / 220-240 / 50 | | | |
| Circuit Breaker | | Min. | A | 40 | | | |
| Power Supply Cable (Included Earth) | | | No x mm ³ | 3C x 6.0 | | | |
| Dimensions | Net | W x H x D | mm | 950 x 1,380 x 330 | | | |
| Weight | Net | | kg | 85 | | | |
| Compressor | Type | | - | Inverter Scroll | | | |
| Refrigerant | Type | | - | R32 | | | |
| | GWP (Global Warming Potential) | | - | 675 | | | |
| | Precharged Amount | | kg | 3.0 | | | |
| | t-CO ₂ eq | | - | 2.025 | | | |
| | Additional Charge (After 7.5m) | | g/m | 40 | | | |
| Fan | Air Flow Rate | Rated | m ³ /min x No. | 55 x 2 | | | |
| Total Piping Length | | Min. / Max. | m | 5 / 85 | | | |
| Piping Elevation | IDU - ODU | Max. | m | 30 | | | |