



Window 8.1 Update-related FAQ

Read this carefully before updating the operating system to Windows 8.1.

The image included in this document may differ by language selection or is subject to change for performance improvements without prior notice.

For more information on how to update to Windows 8.1, refer to "Information on Windows 8.1 Update."

Windows 8.1 Update-related FAQ

CAUTION

- Before updating Windows 8.1, remove the graphics driver.
 - Update without removing the graphics driver may cause a system failure.
 - The graphics driver can be removed in [Control Panel] > [Programs and Features].
- After updating Windows 8.1, access the website of LG Electronics Service Center and download and install the latest drivers for Windows 8.1.
 - If the latest drivers are not installed, the system may not work properly.

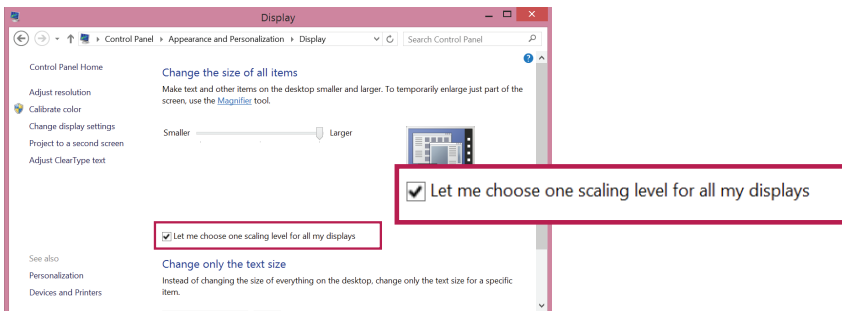
After Windows 8.1 Update is installed

► The computer screen looks blurry.

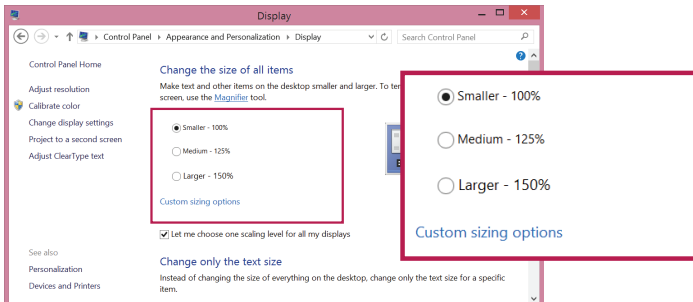
Windows 8.1 Auto Scaling feature may blur the screen or display some icons and texts larger.

Change the DPI scaling to your preferences by referring to the following procedure.

- 1 On the Start Screen, click the [Desktop] tile to convert to the Desktop screen.
- 2 Click the right-mouse button on the Desktop and select [Personalization] > [Display], and check [Let me choose one scaling level for all my displays].



- 3 Select the required item size value and proceed as instructed.



► Intel® WiDi feature does not work.

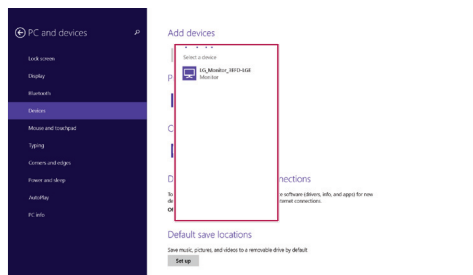
In Windows 8.1, Intel® WiDi feature cannot be used.

Use Windows 8.1 Miracast™ function to connect to other devices wirelessly as shown below.

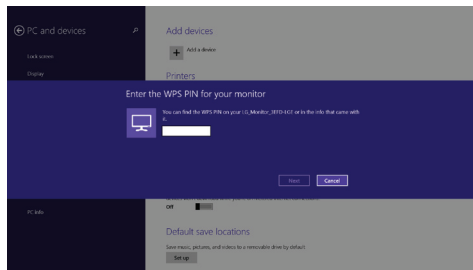
! NOTES

- To use Miracast™, the connected device must support Miracast™ and Miracast™ must be on.

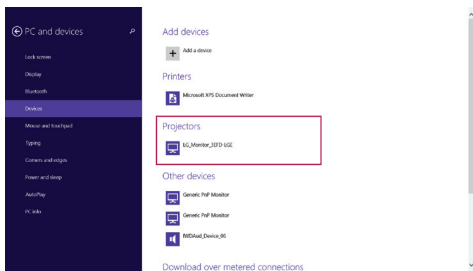
- 1 Run [Charms] on the Desktop or Start screen.
- 2 In Charms, click the [Devices] menu.
- 3 In the [Devices] menu, click [Project] > [Add Wireless Display] to search for a device as shown below.



- 4 When the [WPS PIN] input screen appears, enter [WPS PIN] of the device to connect to.



- 5 When the connection is completed, the connected device appears in the [Projectors] item as shown below.



▶ **Cannot download the driver through LG Update Center.**

When you have installed Windows 8.1 Update, you have to download the required driver from the LG Electronics website and manually install the driver.



NOTES

- Driver and software for Windows 8.1 can be downloaded through LG Electronics' website (<http://www.lg.com/ae/support>).

▶ **During booting, PC initialization cannot be performed through the [F11] key.**

- After updating to Windows 8.1, you cannot perform PC Initialization using the [F11] key.
 - To initialize the computer, run LG Recovery Center and use the [PC Reset] menu.

▶ **Cannot use LG Network Share.**

- Download and install the latest wireless LAN driver from the website of LG Electronics Service Center.

▶ **When the screen is switched after connecting an external monitor, the mouse does not work for 2 to 3 seconds.**

- Download and install the latest graphics driver from the website of LG Electronics Service Center.

▶ **Do the personal settings used in Windows 8 remain after the update?**

- When you use Windows Live account registered in Windows 8, the personal settings will remain as they were after the update.

