






2023 Australia

LG Digital Signage

Commercial Displays & Solutions



Download the LG
Digital Connect Display
App

-  lg.com/au/business/information-display
-  youtube.com/user/LGAustralia/featured
-  [LGInformationDisplay](https://facebook.com/LGInformationDisplay)
-  linkedin.com/company/lg-electronics-australia-pty-ltd
-  [LG_ID_HQ](https://twitter.com/LG_ID_HQ)

LG may make changes to specifications and product descriptions without notice. Copyright ©2023 LG Electronics Inc. All rights reserved. "LG Life's Good" is a registered trademark of LG Corp. The names of products and brands mentioned here may be the trademarks of their respective owners.





Shape Immersive Moments. Share Innovative Experiences.

Make a statement for your business with visually impactful and iconic information displays from LG. LG Digital signage helps businesses convey creative ideas and shape immersive moments.

The vivid, realistic delivery of content provides outstanding presentation of content that is captivating and exciting for a variety of locations and a range of viewing audiences.

Contents

1. LED Signage
2. OLED Signage
3. HighBrightness
4. One:Quick
5. InteractiveDigitalBoards
6. Video Walls
7. Ultra Stretch
8. UHD Signage
9. FHD Signage
10. Special
11. webOS Smart Signage Platform
12. SuperSign Solution
13. Extended Care





LG LED

*Highly Durable and Great Performance.
A Variety of Design Options.*

LG delivers visual performance and stability by expanding its industry leading display technology to LED signage. LG also has a variety of products in the line up to offer customised solutions for indoor or outdoor environments.

LG LED LINE UP

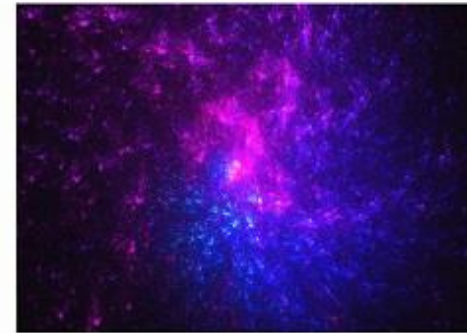


LG MAGNIT LSAB Series

LSAB | P0.78 P0.9 P1.25

- Micro LED Display
- Pixel Pitch : 0.78 mm
- Cable-less Signal Transmission & Power Docking

* Based on LSAB007 Specification



LG Miraclass LDAA25-1 Series

LDAA-1 | P2.50

- Pixel Pitch: 2.5 mm
- ScreenSize:5.1m×2.7m(14sqm)
- Screen Resolution:2,048×1,080px
- Brightness :48(DCI)/100/130/260/300nit
- 3D Support, Dolby Media Server Compatible

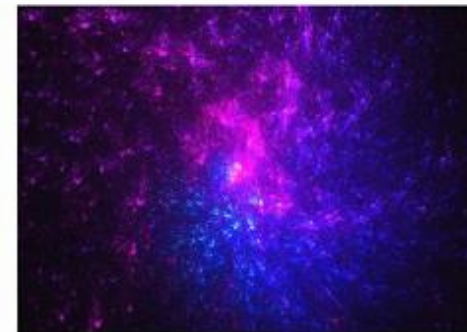


LG MAGNIT LSAD Residential Series

LSAD | P0.78

- Micro LED Technology for Home
- 4K (3,840×2,160) Resolution, 136-inch
- Picture Quality Optimisation with a9 AI Processor
- Built-in Access to Various Streaming Services
- Eye Comfort Certified Low-level Blue Light
- Stylish Media Furniture (Optional)

* Media furniture sold separately



LG Miraclass LDAA025 Cinema Series

LDAA | P2.50

- Pixel Pitch: 2.5 mm
- ScreenSize:10.2 m ×5.4 m (55 sqm)
- Screen Resolution:4,096×2,160px
- Brightness :48(DCI)/100/130/260/300nit
- 3D Support, Dolby Media Server Compatible



LG Miraclass LDAA012 Cinema Series

LDAA | P1.25

- Pixel Pitch: 1.25 mm
- Screen Size:5.1m×2.7m(14sqm)
- Screen Resolution:4,096×2,160px
- Brightness :48(DCI)/100/130/260/300nit
- 3D Support, Dolby Media Server Compatible



LG Miraclass LAD033F Cinema Series

LADF | P3.3

- Pixel Pitch: 3.3 mm
- Screen Size: 14.1 m × 7.2 m (101 sqm)
- Screen Resolution:4,096×2,160px
- Brightness: 48 nit (DCI-compliant / Minimum)
- Compatibility with Dolby Media Server (IMS3000) & Dolby Atmos

LG LED LINE UP



Virtual Production LED LFCL Series

LFCL | P3.91

- Pixel Pitch: 3.91mm
- Brightness: 3,000 nit
- High Durability
- Excellent Usability
- Easy Installation and Maintenance
- Brompton LED Processor & Data Distribution

*Based on LFCL039 Specification



Virtual Production LED LBCK Series

LBCK | P3.91

- Pixel Pitch: 3.91mm
- Brightness: 5,000 nit
- Easy Installation & Maintenance
- Front or Rear Serviceability
- Brompton LED Processor & Data Distribution

*Based on LBCK039 Specification

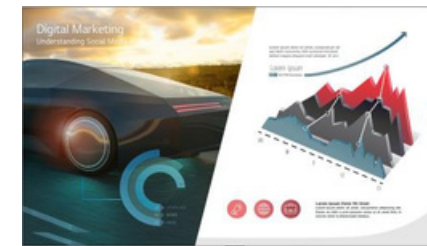


Virtual Production LED LBAE Series

LBAE | P2.60

- Pixel Pitch: 2.60 mm
- Brightness: 1,500 nit
- Easy Installation & Maintenance
- Curve Effect Available
- Stacking & Hanging System Available
- Broadcast Quality Available

*Based on LBAE026 Specification



Compatible with **LG One:Quick** Share

Indoor LG LED All-in-One Series

LAEC | 163" 136"

- Pixel Pitch: 1.56 mm; Brightness: 500 nit
- Screen Size: 136" (Full HD)
- Embedded System Controller
- Built-in Speaker
- Dedicated Accessories :Wall Mount, Motorised Stand (Optional)

* Based on LAEC015-GN2 Specification



Virtual Production LED LBCJ Series

LBCJ | P2.60

- Pixel Pitch: 2.60 mm
- Brightness: 1,500 nit
- Easy Installation & Maintenance
- Curve Effect Available
- Broadcast Quality Available
- Brompton LED Processor & Data Distribution

* Based on LBCJ026 Specification



Transparent LED Film LTAK Series

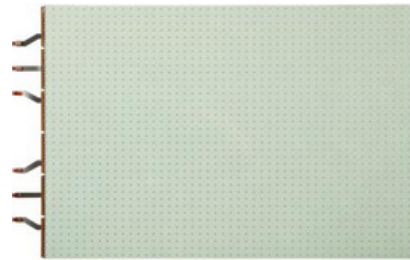
LTAK | P14.00

- Pixel Pitch :13.7 ± 0.2 mm (14)
- LED Type :R GB 3 in 1 Color Package (SMD0909)
- Brightness :2,100 nit (Typ.)
- Transmittance : 60% (Typ.)
- Curvature (Concave and Convex) :2,000 R

* Based on LTAK140-GV Specification

LG LED LINE UP

Transparent LED Film LTAK Series



LTAK | P14.00

- Pixel Pitch 13.713.7±0.2 mm (14)
- LED Type R G B 3 in 1 Color Package (SMD2020)
- Brightness 4,000 nit (Typ.)
- Transmittance: 53%(Typ.)
- Curvature (Concave and Convex) 2,000 R

* Based on LTAK140-GW Specification

LG LED Bloc Series



LSAA | P1.25

- Pixel Pitch: 1.25mm
- Brightness: 600 cd/m²
- Cable less Signal Transmission Power Docking
- AI powered Image Processor
- Real time ConnectedCare Service

*Based on LSAA012 Specification

Indoor Transparent LED Film



LAT | P14.00

- Pitch 14mm
- LED Type: RGB 3in1 SMD
- Transmittance: 53%
- Curvature (concave and convex): 2,000R
- Self adhesive Film

* Based on LAT140 Specification

Indoor Curve LED LCCM Series



LCCM | P1.90 P2.50

- Pixel Pitch: 1.90 mm
- Brightness: 800 nit
- Creative LED Screen
- Easy Installation and Maintenance
- Compatibility with LG Software Solutions

* Based on LCCM019 Specification

LG LED Bloc Series (54")

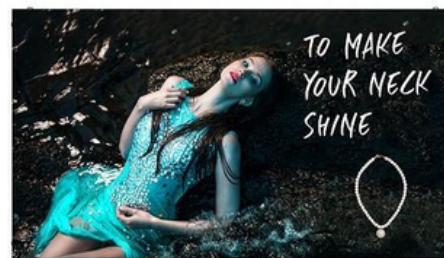


LSAC | P1.25 P2.5

- Pixel Pitch: 1.25 mm
- Brightness: 600 nit
- Cable less Signal Transmission Power Docking
- Alpha 7 Intelligent Processor
- LG webOS Smart Platform

*Based on LSAC012 Specification

Indoor LED LSCB Series



LSCB | P1.25 P1.56 P1.88 P2.50

- Pixel Pitch: 1.25mm
- Brightness: 800cd/m²
- Ultra Slim Depth
- EMC Class B, BS 476 Part7 Class 1

*Based on LSCB012 Specification

LG LED LINE UP



Indoor Floor LED LFCG Series

LFCG | P3.91

- Pixel Pitch: 3.91 mm
- Brightness: 3,000 nit
- High Durability
- Excellent Usability
- Easy Installation and Maintenance
- Interactive Touch Screen

*Based on LFCG039 Specification



Indoor LED LSBC Series

LSBC | P1.95 P2.60 P2.98 P3.91

- Pixel Pitch: 1.95 mm
- Brightness: 800 nit
- Vivid Color Expression Powered by HDR
- 90° Corner Installation Design Available
- Front or Rear Serviceability
- Compatibility with LG Software Solutions

*Based on LSBC019 Specification



Window Facing LED LWBC Series

LWBC | P2.60 P2.98 P3.91

- Pixel Pitch: 2.60 mm
- Brightness: 3,500 nit
- Slim Bezel
- Long lasting High Performance
- Quick Lock Flip Design
- Front or Rear Serviceability

*Based on LWBC026 Specification



*The image above may differ from the actual appearance.

Indoor LED LSCA Series

LSCA | P2.97 P3.91

- Pixel Pitch: 2.97mm
- Brightness: 1,000 cd/m²
- Fast Assembly and Easy Maintenance
- Two Cabinet Options
- 90° Corner Option Available

*Based on LSCA029 Specification



Indoor LED LSBB Series

LSBB | P0.94 P1.25 P1.56 P1.88

- Pixel Pitch: 0.94 mm
- Brightness: 600 nit
- Status Indicator of Signal Detection
- Front Serviceability
- Easy handling Lightweight Cabinet
- Compatibility with LG Software Solutions

* Based on LSBB009 Specification



Stadium LED GPEJ Series

GPEJ | P10.00

- Pixel Pitch 10 mm
- Brightness 6,000 nit
- Service Access Front and Rear
- IP Rating IP65
- Protective Design for Players
- Smooth Playback in Dynamic Motion

* Based on GPEJ100 Specification

LG LED LINE UP



Outdoor Mesh-type LED GMBD Series

GMBD | P35.00 P40.00

- Pixel Pitch: 35 mm
- Brightness: 7,500 nit
- IP Rating: IP66
- Flexibility for Various Screen Shapes
- Lightweight Mesh LED
- Easy Maintenance

* Based on GMBD035 Specification

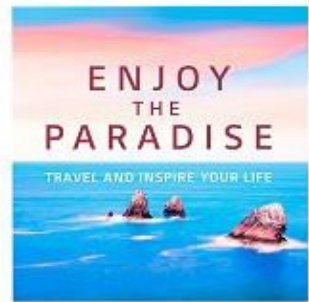


Cruise LED GNEB Series

GNEB | P6.25 P8.33

- Pixel Pitch: 6.25 mm
- Brightness: 6,000 nit
- IP Rating: IP67
- Durability for Rough Environment
- Flexible Configuration and Installation
- High Refresh Rate

* Based on GNEB062 Specification



Outdoor LED GSEH Series

GSEH | P6.00 P8.00 P10.67 P16.00

- Pixel Pitch: 6.00 mm
- Brightness: 8,500 nit
- Quick Installation
- Easy Maintenance
- Front and Rear Serviceability
- Compatibility with LG Software Solutions

* Based on GSEH060 Specification



Stadium LED GREF Series

GREF | P10.00

- Pixel Pitch: 10 mm
- Brightness: 6,000 nit
- IP Rating: IP65
- Smooth Playback in Dynamic Motion
- Detailed Expression of Color Depth

* Based on GREF100 Specification



Seaside LED GNEA Series

GNEA | P6.25 P8.33 P10.00

- Pixel Pitch: 6.25 mm
- Brightness: 6,000 nit
- IP Rating: IP67
- Durability for Rough Environment
- Safe Installation and Maintenance
- High Refresh Rate

* Based on GNEA062 Specification



Eye-level LED GSED Series

GSED | P2.5

- Pixel Pitch: 2.50 mm
- Brightness: 4,000 nit
- Eye level Pitch for Outdoor
- Design for Durability and Easy Maintenance
- Front and Rear Serviceability
- IP Rating: IP66

* Based on GSED025 Specification

LG LED LINE UP



*The image above may differ from the actual appearance.

Outdoor LED GSCA Series

GSCA | P3.91 P4.63

- Pixel Pitch: 3.91mm
- Brightness: 5,000 cd/m²
- Fast Assembly and Easy Maintenance
- Two Cabinet Options
- IP65 Weatherproof Design
- 90° Corner Option Available

*Based on GSCA039 Specification



*The image above may differ from the actual appearance.

Outdoor LED GSCD Series

GSCD | P6.94 P10.41 P12.50

- Pixel Pitch: 6.94mm
- Brightness: 5,000 cd/m²
- Lightweight Design
- IP65 Weatherproof Design
- 90° Corner Option Available

* Based on GSCD069 Specification





LG OLED

Transform Displays into an Artistic Space

LG OLED curvable signage provides the flexibility to integrate panels into a variety of display applications. They can help deliver exceptional advertising effectiveness and add prestige to a space with its innovative formats and lifelike colour accuracy.

LG OLED LINE UP



Curvable OLED EF5K-P

EF5K-P | 55"

- Brightness: 150/400nit (APL 100%/25%)
- Depth: 12.4 mm (Head Only)
- Curvature: ~1,000R(Concave/Convex)
- Interface: HDMI, DP, USB(2), Audio, RS232C, RJ45, IR



Transparent Touch OLED EW5TK-A

EW5TK-A | 55"

- Brightness(Typ.):150 /400 nit(APL 100% / 25%, Without Glass)
- Bezel: 7.9mm(T/B/L),144.5 mm(B)

* Based on 55EW5TK-A Specification



Curvable OLED EF5K-L

EF5K-L | 55"

- Brightness: 150/400nit (APL 100%/25%)
- Depth:12.4 mm(Head Only)
- Curvature: ~1,000R(Concave/Convex)
- Interface: HDMI, DP, USB(2), Audio, RS232C, RJ45, IR

*Based on 55EF5K-L Specification



Transparent OLED EW5PG-S

EW5PG-S | 55"

- Brightness(Typ.): 400nit(APL25%,WithoutGlass)
- Transparency(Typ.):38%
- Standalone Design

*Based on 55EW5PG-S Specification



Wallpaper OLED EJ5K

EJ5K | 55"

- Brightness(Typ.): 150/400nit(APL100%/25%)
- Bezel: 5.3mm(T/B/L),11.0mm(B)
- Interface : HDMI/DP/USB(2)/ RS232C/ RJ45/ Audio/ IR

* Based on 55EJ5K Specification



Transparent OLED EW5G-V

EW5G-V | 55"

- Brightness(Typ.): 400nit (APL 25%, Without Glass)
- Transparency(Typ.): 38%
- Bezel:7.9mm(T/B/L),121.7 mm(B)
- Interface: HDMI/DP/USB(2)/ RS232C/ RJ45/ Audio/ IR

* Based on 55EW5G-V Specification

LG OLED LINE UP



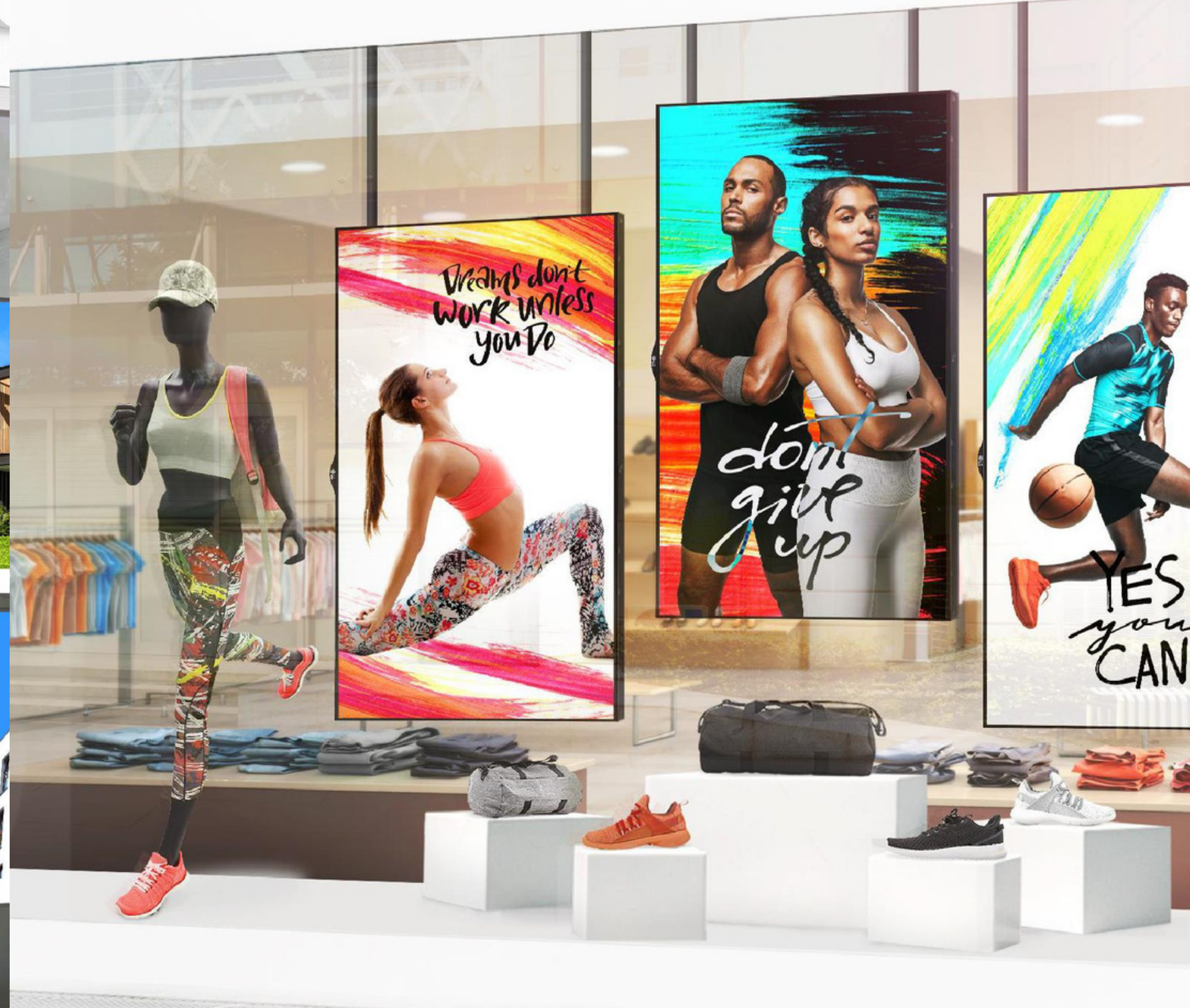
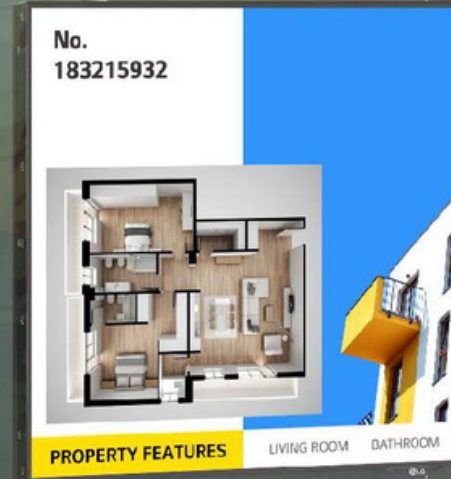
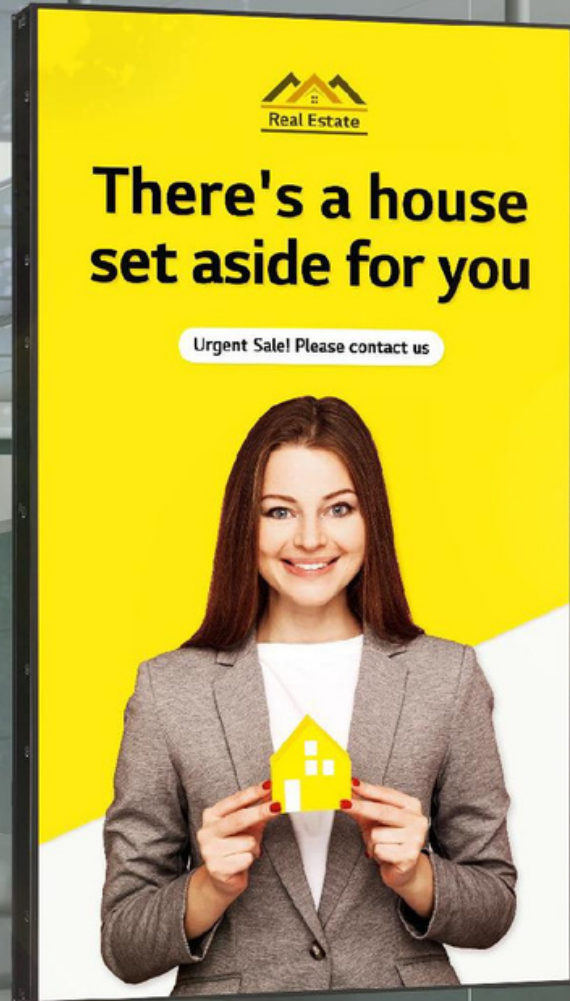
OLED Pro Monitor EP5G Series

EP5G | 65"

- Accurate Color with a Wide OLED Screen
- Jack Interfaces for Professional (SDI, SFP+, etc.)
- Smart Calibration
- Brightness(Typ.): 950 / 850 / 450 / 175 @ D65 (APL 3% / 10% / 25% / 100%)

* Based on 65EP5G Specification





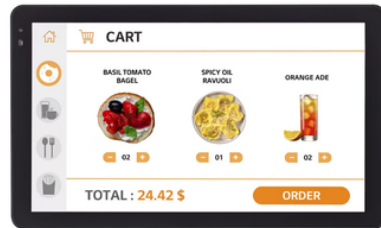
LG HIGH BRIGHTNESS

Outstanding Visibility with Reliable Performance

Without standing picture quality and excellent durability, these display's deliver eye-catching content to captivate customers even under direct sunlight or extreme environmental fluctuations.

LG HIGH BRIGHTNESS LINEUP

FHD Outdoor Touch Open-frame Display



- XE1J-B | 22"
- Brightness : 1,300 nits (Typ. w/Glass)
 - IP65 Rated Dust & Waterproof
 - 21.5" of Versatile Display Size
 - Wide Operating Temperature Range
 - webOS Smart Platform
 - Built-in Touch Display

*Based on 22XE1T-J Specification

IP-rated Outdoor Display XE1J-B Series



- XE1J-B | 22"
- Brightness (Typ, w/ Glass) : 1,500 nits
 - IP56 Rated Dust / Water Proof
 - 21.5 of Versatile Display Size
 - Wide Operating Temperature Range
 - webOS Smart Platform
 - Web-based Monitoring Solution

*Based on 22XE1J-B Specification

Window Facing Display XS4G Series



- XS4G | 75"
- Brightness :4,000 nits (Typ.) / 3,200 nits (Min.)
 - Resolution: ULTRA HD(3,840x2,160)zel:13.8 mm(Even Bezel)
 - Double-sided Usage with Dedicated Bracket
 - Built-in Wi-Fi & Bluetooth
 - Web-based Monitoring Solution

*Based on 75XS4G Specification

Window Facing Display XS4J-B Series



- XS4J-B | 55" 49"
- Brightness :4,000 nits (Typ.) / 3,200 nits (Min.)
 - Resolution : Full HD (1,920 x 1,080)
 - Bezel (T,B/R,L):12.0/9.9mm
 - webOS - based High Performance
 - Built-in Wi-Fi
 - Web-based Monitoring Solution

*Based on 55XS4J-B Specification

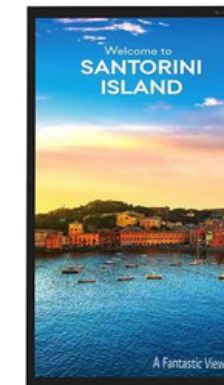
IP-rated Outdoor Display XE3FS-B Series



- XE3FS-B | 86"
- Brightness(Typ.): 3,000 cd/m²
 - Bezel: 101 mm(T/B),135 mm(L/R)
 - Interface: HDMI/DP/DVI-D/USB/Audio/RS232C/ RJ45/ External IR
 - Anti-Reflection Coating
 - IP56 Design, Protective Glass

*Based on 86XE3FS-B Specification

IP-rated Outdoor Display XE4F-M Series



- XE4F-M | 55" 49"
- Brightness(Typ.) : 4,000 cd/m²
 - Bezel :38.4 mm(T/B),26.0 mm(L/R)
 - Interface: HDMI/DP/HDBaseT/USB/Audio/RS232C/RJ45
 - Anti-Reflection Coating
 - IP56 Design, IK10 Protective Glass

* Based on 55XE4F-M Specification

LG HIGH BRIGHTNESS LINEUP



IP-rated Outdoor Display XE3C Series

XE3C | 75"

- Brightness(Typ.) : 3,000 cd/m²
- Operating Temperature: -30°C to 50°C
- IP56 Design
- Interface : HDMI / DP / DVI / RJ45 / RS232C / SD Card / USB3.0 / External speaker out

*Based on 75XE3C Specification



Open-frame XF3E-B

XF3E-B | 55" 49"

- Brightness: 3,000 cd/m² (Typ.)
- Life Time: 50,000 hours
- Bezel: 9.9mm(L/R),12mm(T/B)
- Depth: 106.8mm
- Interface: HDMI(2) / DP / DVI-D / RJ45 / RS232C / USB / External speaker out (L/R)

*Based on 55XF3E-B Specification



Open-frame Display XF3SK Series

XF3SK | 86"

- Brightness: 3,300 nits (Typ. w/o Glass)
- Resolution:3,840 × 2,160 (UHD)
- Long-lastingHigh Performance
- Temperature Sensor
- Auto Brightness Sensor

*Based on 86XF3SK Specification



Open-frame Display XF3C-B Series

XF3C-B | 75"

- Brightness: 3,000 cd/m² (Typ.)
- Life Time: 50,000 hours
- Bezel: 12.8 mm (Even bezel)
- Depth: 123.9 mm
- Interface: HDMI (2) / DP / DVI / RJ45 / IR / RS232C / USB/SD Card /External speaker out(L/R)

*Based on 75XF3C-B Specification



Open-frame Display XF3ES-B Series

XF3ES-B | 75"

- Brightness: 3,000 cd/m² (Typ.)
- Life Time: 50,000 hours
- Bezel: 11.8mm (Even bezel)
- Depth: 128.9 mm
- Interface: HDMI(2)/DP/DVI-D/USB/RJ45/RS232C/IR/ External speaker out

*Based on 75XF3ES-B Specification





LG One:Quick Series

What a One:derful Life

- One:Quick Works
- One:Quick Flex
- One:Quick Share

LG ONE:QUICK LINEUP

One:Quick Works for Zoom Room



CT5WJ-ZJ | 55"

- Resolution : 4K Ultra HD (3,840 x 2,160)
- Brightness: 450 nit
- Built-in Camera & Microphone
- Sound (10W + 10W)
- In-Cell Touch (Max. 10 Points) & Whiteboard Support
- Zoom Rooms App Preloaded

*Based on 55CT5WJ-ZJ Specification



One:Quick Flex Series

HT3WJ | 43"

- Resolution: 4K Ultra HD (3,840 × 2,160)
- Brightness: 350 nit
- Camera: 2K Full HD (1,920 × 1,080), 88° FoV
- Sound: 2.0 Channel (10W + 10W)
- Microphone: 3m Pickup Range
- Windows 10 IoT Enterprise (Basic)

* Based on 43HT3WJ Specification

* Screen images simulated.
* Stands are sold separately.

One:Quick Works



CT5WJ | 55"

- Resolution: 4K Ultra HD (3,840 x 2,160)
- Brightness: 450 nit
- Built-in 4K Camera & Microphone
- Sound (10W + 10W)
- In-Cell Touch (Max. 10 Points) & Whiteboard Support
- Windows 10 IoT Enterprise (Value)

* Based on 55CT5WJ Specification

* Screen images simulated.



One:Quick Share Series

SC-00DA

- Embedded OS: Linux
- Wi-Fi: IEEE 802.11 a/b/g/n/ac
- Connectivity: USB 2.0 Type A (1)
- Work together with LG One:Quick Share Application and Compatible LG digital signage models

* Based on SC-00DA Specification

LG One:Quick Share





LG Interactive Digital Board

Interactive Touch Screens

The LG Interactive Digital Board (IDB) boosts meeting productivity by encouraging participants to freely share their ideas on the screen using intuitive touch and embedded collaboration solutions.

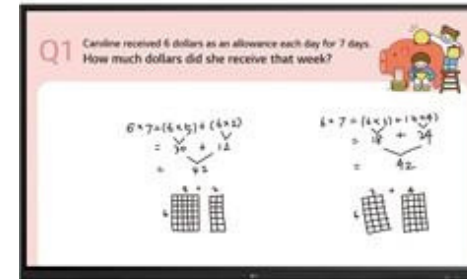
LG INTERACTIVE DIGITAL BOARD LINE UP



CreateBoard TR3DK Series

- TR3DK | 86" 75" 65" 55"
- Brightness (w/o Glass): 440 nit (Max.), 390 nit (Typ.)
 - Resolution: 3,840x2,160(UHD)
 - Multi-Touch Point: 40 Points (Max.)

* Based on 86TR3DK Specification



CreateBoard TR3DJ Series

- TR3DJ | 86" 75" 65"
- Brightness: 390nit (w/oGlass,Typ.)
 - Multi Touch Point: 20Points (Max.)
 - Interface: HDMI(3),RGB(1),AudioIn(1),RS-232C In(1),RJ45(1),USB 3.0 TypeA (3),USB 2.0 TypeA (3), Audio Out / Optical Output, Touch USB (2)

* Based on 86TR3DJ Specification

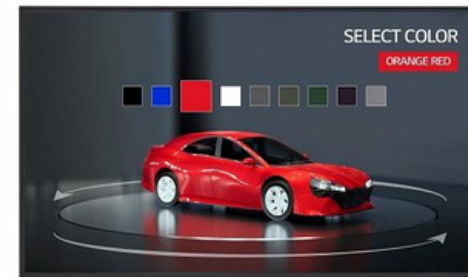
LG Touch Open Frame LINE UP



Touch Open Frame TNF5J Series

- TNF5J | 55" 43" 32"
- Brightness: 450 nit
 - Multi-Touch Point: 10 Points (Max.)
 - Interface: HDMI (2,HDCP2.2/1.4), RS-232CIn, RJ45(LAN), IRIn, USB2.0 TypeA, AudioOut, TouchUSB (USB 2.0 TypeB)

* Based on 55TNF5J Specification



Touch Open Frame TNF3K Series

- TNF3K | 27"
- 27" Full HD Touch Display
 - Brightness: 300 nit
 - Multi-Touch Point: Max 10 Points
 - Interface: HDMI (2) / RS-232C / RJ45 / IR / USB 2.0TypeA/Audio/TouchUSB (USB2.0 TypeB)

* Based on 27TNF3K Specification



LG VIDEO WALL

Captivating, Artistic and Immersive

Designed for assembly on large wall surfaces the immersive experience generated by the extremely narrow bezels provide an extraordinary viewing experience.

LG VIDEO WALL LINEUP



Video Wall VL5PJ Series

VL5PJ | 55" 49"

- Brightness(Typ.) : 500 nit
- Bezel:2.25 mm(T/L),1.25mm(B/R) •Depth : 93.1 mm
- Interface : HDMI/ DP/ DVI-D/ USB/ RS232C/ RJ45/ Audio/ IR

* Based on 55VL5PJ Specification



Video Wall VL5G-M Series

VL5G-M | 49"

- Brightness(Typ.) : 500 cd/m²
- Bezel:2.25 mm(T/L),1.25mm(B/R) •Depth : 89.7 mm
- Interface : HDMI/ DP/ DVI-D/ USB/ RS232C/ RJ45/ Audio/ IR

* Based on 49VL5G-M Specification

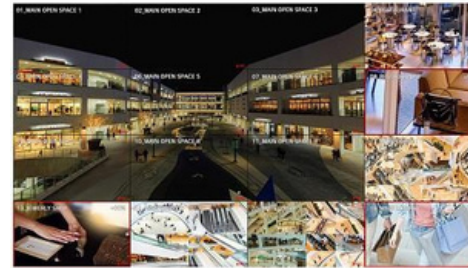


Video Wall VH7J-H Series

VH7J-H | 55"

- Brightness(Typ.) : 700 nit
- Bezel:1.74mm(PanelBezeltoPanel Bezel),1.3mm (T/L), 0.44mm(B/R)
- Depth : 86.9 mm
- Interface : HDMI/ DP/ DVI-D/ USB/ RS232C/ RJ45/ Audio/ IR

* Based on 55VH7J-H Specification



Video Wall VSH7J Series

VSH7J | 55"

- Brightness(Typ.) : 700 cd/m²
- Bezel:0.44 mm(Even)
- Depth : 86.5 mm
- Interface : HDMI(2)/ DP/ DVI-D/ USB/ RS232C/RJ45/Audio/ IR
- Smart Calibration

* Based on 55VSH7J Specification

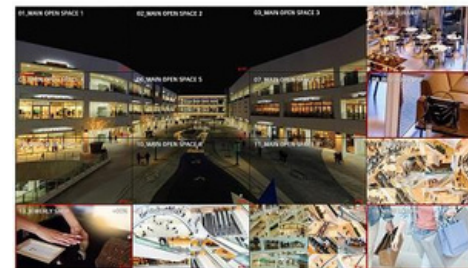


Video Wall VM5J-H Series

VM5J-H | 55"

- Brightness(Typ.) : 500 nit
- Bezel:1.74mm(PanelBezeltoPanel Bezel), 1.3mm (T/L), 0.44mm(B/R)
- Depth : 86.9 mm
- Interface : HDMI/ DP/ DVI-D/ USB/ RS232C/ RJ45/ Audio/ IR

* Based on 55VM5J-H Specification



Video Wall VSM5J Series

VSM5J | 55"

- Brightness(Typ.) : 500 cd/m²
- Bezel:0.44 mm(Even)
- Depth : 86.5 mm
- Interface : HDMI(2)/ DP/ DVI-D/ USB/ RS232C/ RJ45/Audio/ IR
- Smart Calibration

* Based on 55VSM5J Specification

LG VIDEO WALL LINEUP



Video Wall VL7F-A Series

VL7F-A | 55"

- Brightness(Typ.) : 700 cd/m²
- Bezel:2.25 mm(T/L),1.25mm(B/R)
- Depth : 93.1 mm
- Interface : HDMI (2)/ DP/ DVI-D/ USB/ RS232C/ RJ45/Audio/ IR

*Based on 55VL7F-A Specification





LG Stretch

Space Fitting Design for Effective Advertising

The unique bar-type displays are ideal for showing vertical or horizontal objects without truncation or compound content composed of video and text. Placed on pillars or any long structures, they provide an extraordinary viewing experience.

LG STRETCH LINEUP

Stretch BH5F-M Series

BH5F-M | 86"



- Brightness(Typ.) 500 cd/m²
- Aspect Ratio: 58:9
- Bezel: 4.4 mm(L/R), 5.9 mm(T/B)
- Depth: 81.7mm
- Interface: HDMI (DP, USB(2), Audio, DVI D, RS232C, RJ45, IR

* Based on 86BH5F-M Specification

Stretch BH7N Series

37BH7N | 37"



- Resolution : 1,920 × 540
- Brightness : 700 nit
- 32:9 Wide Screen
- Slim Design
- SuperSign CMS, SuperSign Control+, SuperSign WB, Mobile CMS, LG ConnectedCare
- webOS Solution

* Based on 37BH7N Specification





DEPARTURES				
CITY	TIME	FLIGHT	GATE	REMARKS
Anchorage	8:00pm		50	On Time
Austin	10:15am		56B	On Time
Boston	11:40am		57	On Time
Chicago/O'Hare	10:15am		53	Now
Chicago/O'Hare	11:50am		58A	Now
Chicago/O'Hare	12:15pm		56B	On Time
Chicago/O'Hare	2:15pm			On Time
Chicago/O'Hare	3:40pm		57	On Time
Chicago/O'Hare	5:20pm		58B	On Time
Chicago/O'Hare	9:50am		56B	On Time
Chicago/O'Hare	11:40am		58A	On Time
Dallas/Ft. Worth	12:50pm		58B	On Time
Dallas/Ft. Worth	1:10pm		58A	On Time
Dallas/Ft. Worth	1:15pm		53	On Time
Dallas/Ft. Worth	2:35pm			On Time
Dallas/Ft. Worth	3:25pm			On Time
Dallas/Ft. Worth	4:55pm			On Time
Dallas/Ft. Worth	6:00pm			On Time
Las Vegas	12:05pm			On Time
Las Vegas	1:35pm			On Time
Las Vegas	2:40pm			On Time
Las Vegas	4:55pm			On Time
Las Vegas	6:10pm			On Time
Las Vegas	8:05pm			On Time

SPRING MAKEUP

Cosmetics are substances or products used to enhance or alter the appearance or fragrance of the body.

ANTIAGING SYSTEM

LG UHD
Absolute Colour on Ultra HD Display

Vibrant colours and a powerful performance brings content to life, enticing the crowd to discover and interact.

LG UHD LINEUP



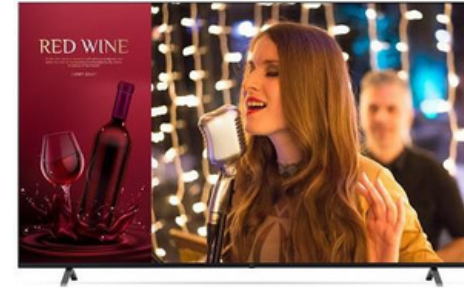
Compatible with **LG One:Quick** Share

Standard UL3J-B Series

UL3J-B | 86" 75" 65" 55" 50" 43"

- Brightness(Typ.) : 330 nits
- Resolution :ULTRA HD (3,840 x 2,160)
- webOS-based High Performance
- Built-in Speaker
- Compatible with LG'sOne:Quick Share
- Compatible with AV Control Systems

* Based on 86UL3J-B Specification



Standard UR640S Series

UR640S | 86" 75" 65" 55" 50" 43"

- Brightness(Typ.) : 330 nits
- Resolution: ULTRAHD(3,840x2,160)
- webOS-based High Performance
- Easy Content Management/Group Management
- SuperSign Control / CMS Compatibility

*Based on 86UR640S Specification



Standard UH5J Series

UH5J | 98"86"75" 65"55"49"43"

- Brightness(Typ.) : 500 cd/m²
- Surface Treatment(Haze):28%
- Bezel:14.9 mm(Evenbezel)
- Depth : 86.1 mm
- Interface : HDMI(3)/ DP/ DVI-D/ USB 2.0/ RS232C/ RJ45/ Audio/IR
- Built-in Speaker

* Based on 98UH5J-H Specification



Standard UH7J-H Series

UH7J-H | 65" 55" 49" 43"

- Brightness(Typ.) : 700 nit
- SurfaceTreatment (Haze):28%
- Bezel :9.9mm(T/R/L),14.4mm(B)
- Depth : 39.9 mm
- Interface :HDMI(2)/ DP/ DVI-D/ USB 2.0(2)/ RS232C/RJ45/ Audio/IR
- Built-in Speaker

* Based on 65UH7J-H Specification



Standard UM5J Series

UM5J | 98" 110"

- Brightness: 500nit(Typ.), 400nit(Min.)
- Resolution: ULTRA HD (3,840x2,160)
- Built-in Wi-Fi / Bluetooth
- Built-in Speaker (10 W + 10 W)

* Based on 110UM5J Specification



Standard UM5K Series

UM5K | 98" 110"

- Brightness:500nit (Typ.)
- Resolution :ULTRA HD (3,840 x 2,160)
- Bezel :17 mm (Even bezel)
- Built-in Speaker (10 W + 10 W)
- Interface : HDMI(3)/ DP/ DVI-D/ USB 2.0/ RS232C/RJ45/ Audio/IR

* Based on 110UM5K Specification



LG FHD

A Variety of Offers for a Range of Locations

Easily installed in a variety of venue locations, LG digital signage plays an integral role in customer engagement and spatial enhancement.

LG FHD LINEUP

Standard SM5J-B Series



SM5J-B |32"

- Brightness(Typ.) : 400 cd/m²
- Bezel :13 mm (T/R/L), 18 mm (B)
- Depth:55.5mm
- Interface : HDMI(3) /USB 2.0/ RS232C/ RJ45/ IR / Audio Out
- Built-in Speaker : 10W + 10W

* Based on 32SM5J-B Specification

Standard SM3G-B Series



SM3G-B |22"

- Brightness(Typ.) : 250 cd/m²
- Bezel: 16.3m
- Depth: 53.8mm
- Interface: HDMI(2) / USB 2.0 / RS232C / RJ45 / IR / Audio
- USB Plug & Play, Built-in Wi-Fi

* Based on 22SM3G-B Specification





LG SPECIAL

Experience Effective and Entertaining LG Special Signage

LG's Special allows you to experience effective and entertaining signages, designed to the particular requirements of a commercial environment. LG will revolutionise the way you conduct business.

LG SPECIAL LINEUP



Self-Ordering Kiosk 27KC3PK-C

KC3PK-C | 27"

- 27-inch Display with an Excellent Touch Sensitivity
- Interior Fit Design
- Windows OS
- Tactile Keypad

* Based on 27KC3PK-C Specification

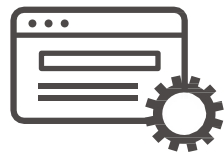


webOS is a web based multipurpose platform in which a variety of web applications are deployed and implemented. It helps digital signage maximise interaction with customers by going beyond its conventional function of advertisement and information delivery, which ultimately serves as a partner to make your business thrive.



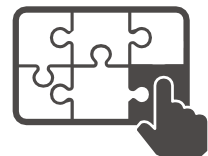
Built-in Player

Powered by high performance SoCs, it plays content with superb video graphic performance, without the need for a PC. Eliminating the need to purchase peripherals and extra cost for maintenance makes installation simpler and reduces the TCO.



Web-Centric

Using the most common web programming languages, including HTML, JavaScript, and CSS offers familiarity when creating and adapting your applications for the webOS platform.



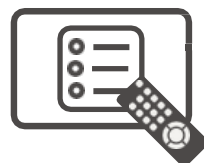
Simple Customisation

Free from any constraints, you can simply add interactive applications or external sensors to webOS signage for a higher level of customer engagement.



Secured Communication

webOS ensures reliable communication between displays and web/data servers by supporting HTTPS and proxy servers.



Content Management

webOS offers an embedded content management system equipped with an intuitive GUI, meaning that first time users won't have to go through a complicated learning process to manage their displays



Monitoring and Control

Users can control and monitor the status of multiple displays in different locations in real time, which is also available on internet connected mobile devices, allowing you to rapidly respond to emergent situations.

webOS Player

Even if you have an old version of webOS signage, you can make full use of the benefit of webOS platforms by purchasing only a webOS player. The LG webOS player, WP401 and WP402, upgrades your signage to webOS 4.0, allowing your old digital signage to perform its best.



To Become a Partner

<http://webossignage.developer.lge.com/discover/our-partners>

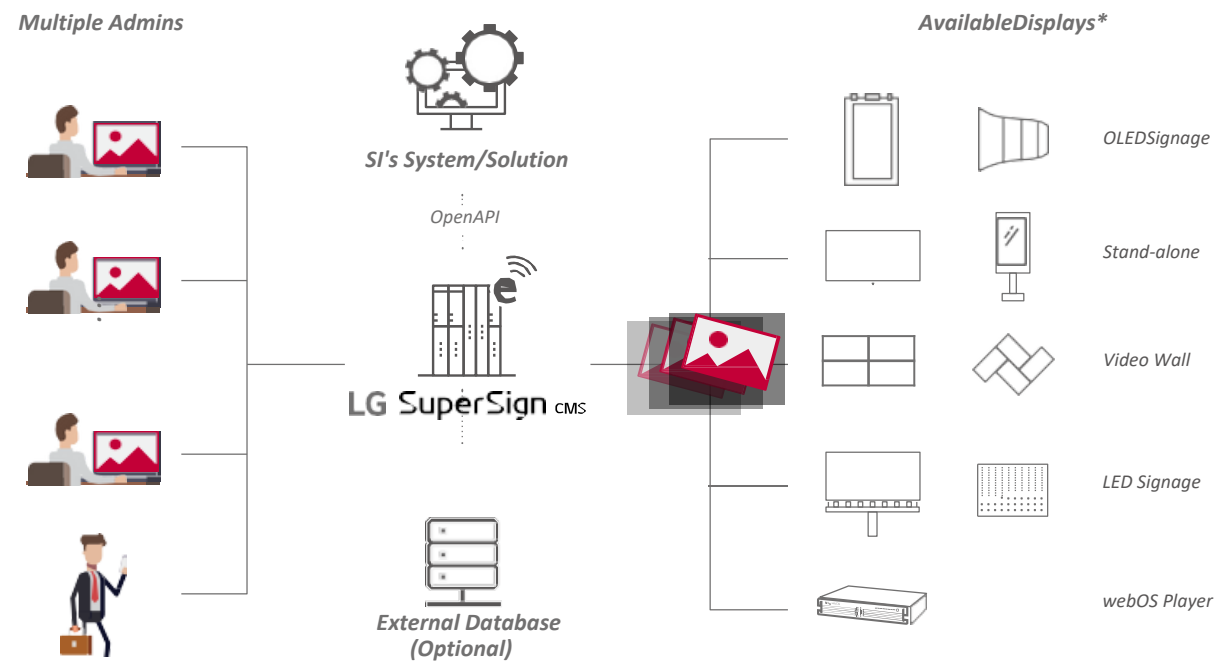
LG is always on the success of our partners' business and keeps our minds open to achieve that success.

The webOS Signage Developer Site is a significant part of this. Once you become authorised as a webOS partner, you can not only download the essential sources such as SDK, SCAP libraries, or sample applications, but also get answers and technical support from LG.

SuperSign CMS

Versatile content management with enhanced usability

A variety of LG digital signage, whether stand-alone, outdoor, video walls or LED signage, can be simultaneously connected and seamlessly managed by SuperSignCMS with a single server. Administrators are free from the restraints of managing various display types and installation places, and they can operate an array of displays easily using a PC or mobile phone. Going a step further, SuperSign CMS offers Open API, which allows system integrators to consolidate their solutions with SuperSign features and easily optimise them for LG digital signage, expanding the scope of its possible applications.



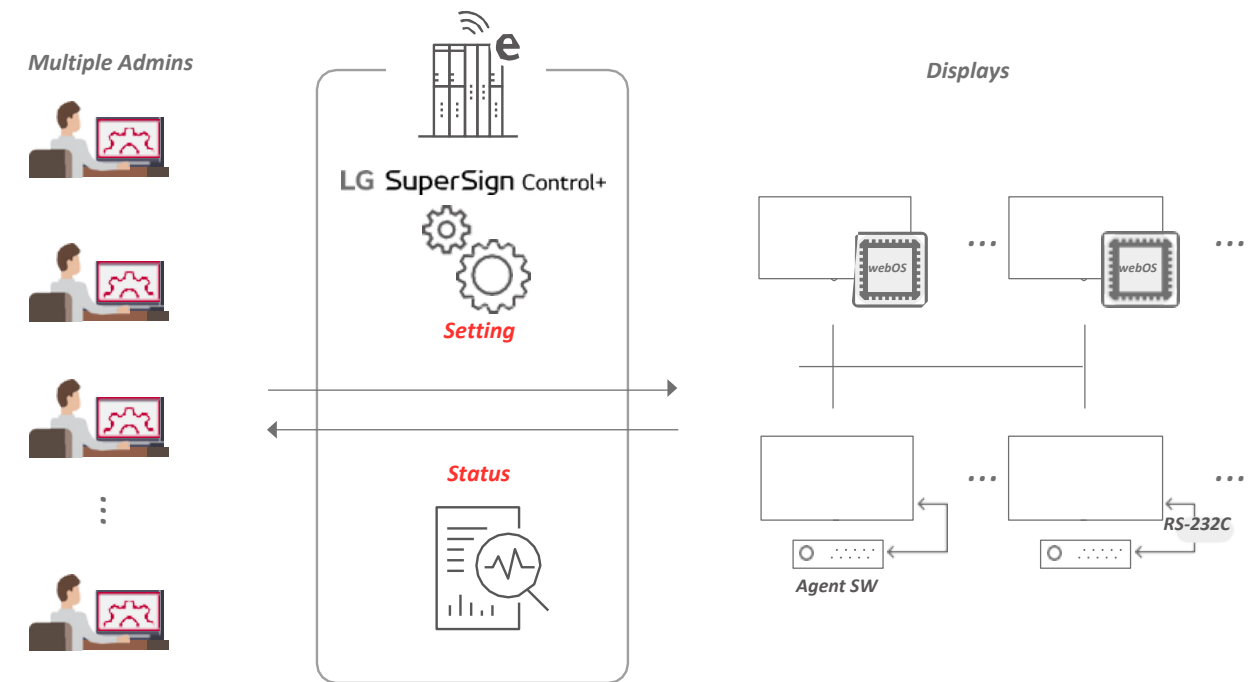
No. of Displays	-50	-500	-1000
Server Construction	Single Server	Single Server	Single Server
Recommended OS	Windows 7, Windows 8.1, Windows 10	Windows 7, Windows 8.1, Windows 10, Windows Server 2012 R2, Windows Server 2016	Windows 7, Windows 8.1, Windows 10, Windows Server 2012 R2, Windows Server 2016
CPU	Intel Core 2 Duo (2.5 GHz) or higher	Intel i7 or higher	Intel XEON E5-2676 v3 8 Core or higher
Memory	4 GB or more	4 GB or more	4 GB or more
HDD	40 GB or more of free space	40 GB or more of free space	40 GB or more of free space
Network Bandwidth	100 Mbps or higher	100 Mbps or higher	100 Mbps or higher
Browser	Internet Explorer 10 or later Chrome 50 or later	Internet Explorer 10 or later Chrome 50 or later	Internet Explorer 10 or later Chrome 50 or later

* Support may differ by model series.

SuperSign Control+

Integrated Monitoring and Real-time Control

SuperSign Control+ is a remote control and monitoring software solution optimised for LG digital signage. It focuses on large scale deployment, supporting more than thousands of displays. Multiple accounts can access the SuperSign Control+ server via network to monitor the status of connected displays in real-time, control them, and adjust their setting values. As an ever-ready solution, it continuously monitors the status of displays and instantly sends out e-mail alerts to administrators when problems occur. Alerts and warning scan be customised according to various parameters such as power, fan and temperature as managers see fit.



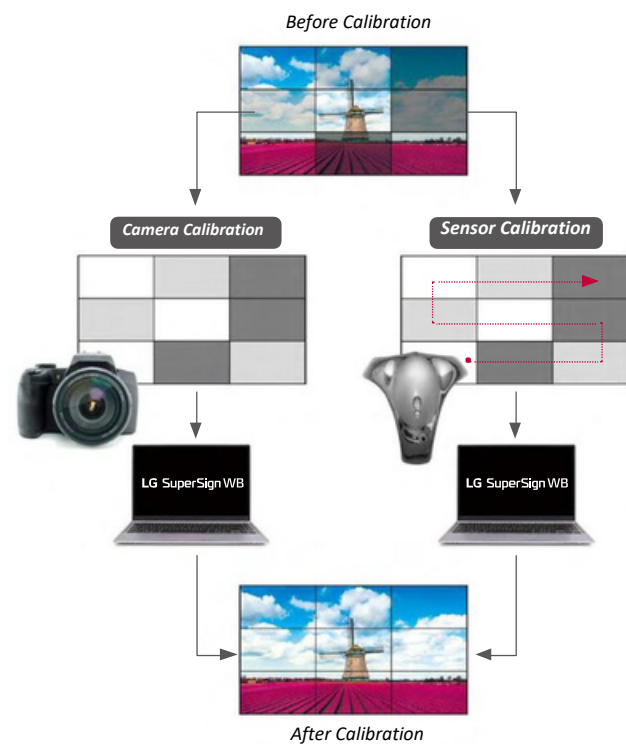
	SuperSign Control+ Manager	SuperSign Control+ Agent
Recommended OS	Windows 7 64bit Platform Windows 10 64bit Platform Windows Server 2012 R2 64bit Platform	Windows 7 Windows 10 Windows Server 2012 R2
CPU	Intel XEON E5-2676 v3 8 Core or higher	Intel Core 2 Duo (2.5 GHz) or higher
Memory	8 GB or more	4 GB or more
HDD	40 GB or more of free space	40 GB or more of free space
Network Bandwidth	100 Mbps or higher	100 Mbps or higher
Browser	Chrome 50 or later	N/A

Software Solution

SuperSign WB

Achieve Superb Colour Consistency

Delivering stable and accurate colour among connected displays is a key factor in determining the picture quality of a video wall. SuperSign WB adjusts the white balance to achieve this purpose by supporting camera and sensor calibration. Camera calibration lets users save time and man power due to a simpler process than traditional sensor calibration, but it can recognise up to 3 x3 layouts. So sensor calibration is recommended when a video wall layout has an irregular shape or is beyond 3 x3 tiling.



Camera Calibration

Camera	DSLR Camera, Nikon D5300, D5500, D5600
Lens	AF-S DX NIKKOR 18-55 mm F3.5-5.6G VR II
Tripod	Doesn't matter
USB	One available Camera to PC (USB) connect cable Recommended : USB extender cable 10M (32 feet)
RS232	One available RS232 to PC (USB) connect cable Recommended : RS232 Serial extender cable 10M (32 feet)

Sensor Calibration

Supported Models	Spyder 3/4/5, i1 Display Pro, ACB8300, CA210/310
-------------------------	--

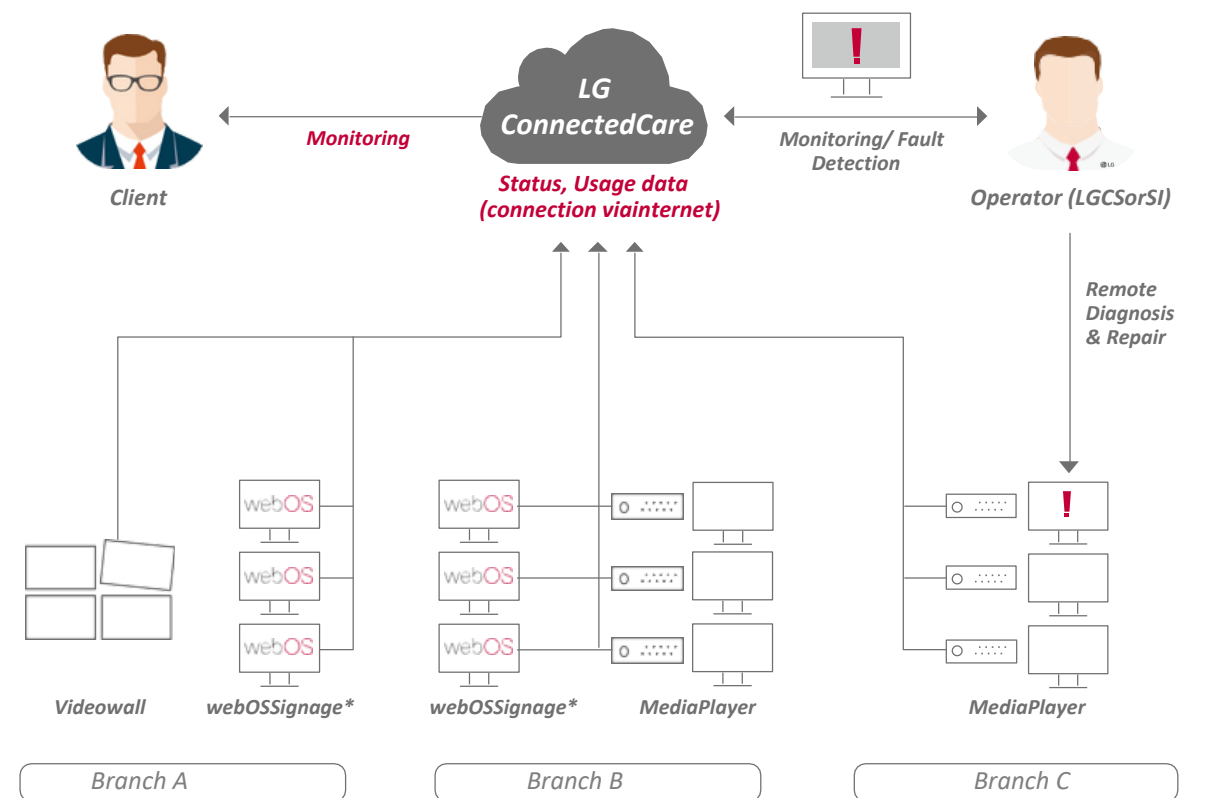
- Camera calibration is restricted to video wall models in configurations of up to 3x3.
- For optimal calibration results, your camera and video wall must each be facing the front center of the other.
- Install your camera in a horizontal orientation. Positioning your camera vertically may cause monitor detection to fail, which will lead to improper calibration.
- Only video walls configured in a square formation can be calibrated. Irregularly installed video walls are not supported.

LG ConnectedCare

Real-time Monitoring and Fault Detection

Maintenance is easy and fast with the optional ConnectedCare* service, a cloud service solution provided by LG. It remotely manages the status of displays in client workplaces for fault diagnosis and remote-control services, supporting the stable operation of clients' businesses.

**This service is optional and requires a subscription or purchase.*



**The versions of webOS and displays supported are currently being expanded. For further details, please contact LG sales in your region.*

LG ExtendedCare™

LG's true value begins after purchase. LG ExtendedCare plans offer you different levels of protection so that you can choose the perfect way to manage your digital signage.



Longer Warranty Brings Peace of Mind

As digital displays become more advanced prices also increase. LG's extended warranty helps maintain your important asset in its best condition.



Problems Solved as Quickly as Possible

Our LG service team will reach you within the Next Business Day depending on the coverage you select, thereby minimising downtime and quickly getting things up and running again.



Leave It Up to Our Experts

Authorised and experienced LG service technicians will provide repair and reinstallation services so that you don't have to lift a finger.

*Specifications are subject to change without notice. Please make sure to check the product manual for details about product usage.