

LG Digital Learning Solutions Take that Digital Leap, to the Forefront of **Education**



LG Digital Learning Solutions QR CODE

-  https://b2bmk.lge.com/LG_Education
-  www.lg.com/global/business/information-display
-  www.linkedin.com/company/lginformationdisplay
-  www.facebook.com/LGInformationDisplay



Education Meets Digital Technology

Over the past few years, the traditional four-walled classroom has been disrupted. In its place, we discover a mixture of learning spaces that include brick-and-mortar schools, online learning and even hallways as an additional classroom.

Such pivots in learning environment design require a more nuanced role for education technology - durable options, provide a diverse set of hardware offerings, and hardware that is interoperable with other technology in the space and is conducive to multiple modes of instruction at the same time.

Audio-visual and IT technology can play a key role in this endeavour.

LG offers a wide range of commercial display options to address school-wide individualised learning, communication, and public safety needs.

Digital Signage can be installed in and outside classrooms, common areas such as cafeterias, libraries, and special areas like stadiums and auditoriums. Aside from information sharing,

Digital Signage also delivers large-scale experiences that are impressive and captivating, enabling teachers and students to interact and communicate.



All human beings have infinite potential.

Education plays a pivotal role in determining and maximising an individual's capabilities. It is no longer limited to the simple delivery of knowledge.

The purpose of education is to cultivate the power of thought, which enables knowledge creation based on various information and data.

LG provides a wide array of display options that can create a more engaged, flexible and individualised learning environment.

Competence such as creativity, communication skills, and problem-solving are becoming increasingly important for the future. New values are born from connecting people to people, communicating, and sharing knowledge.



K-12 Education

The educational field is not just a place to learn knowledge and skills but where future hopes sprout. This means it is just as important to consider "how" as much as "what" should be taught.

LG proposes an answer for this in the field of education. This is an era where teachers and students are more familiar with digital displays than paper and blackboards. What kind of education is exciting and effective for growing sprouts?

Experience the new future of education through LG's Digital Learning solution.

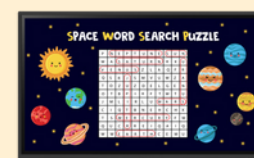


Blended Learning Spaces

Blended Learning utilises technology to provide better access to high-quality learning experiences.

Teachers can foster interactive environments, especially with tools like LG CreateBoard. Through its screen-sharing feature, students simultaneously put their heads together, and its multi-touch and note-taking features unlock students' creativity.

In group discussions, the intuitive touching and drawing functions and wheeled portability of LG One:Quick Flex facilitates fluid discussions for students to share free-flowing ideas.



LG CreateBoard
86/75/65/55" UHD
Multi-touch 40 points

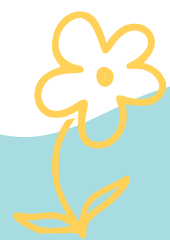


LG LED All-in-One
163/136" FHD



LG One:Quick Flex
43" UHD
Multi-touch 10 points

*Screen images simulated
*Stands are sold Separately



Gamification Environments

Gamification makes learning fun and instils motivation.

Technology is key to this approach, providing eye-catching visuals, interactive media, and competitive frameworks for classroom activities.

LG CreateBoard and LG One:Quick Flex help grab students' attention and hold their interest, helping them remain actively engaged with the lesson material.



LG CreateBoard
86/75/65/55" UHD
Multi-touch 40 points



LG One:Quick Flex
43" UHD
Multi-touch 10 points

*Screen images simulated
*Stands are sold Separately

Flipped Learning Spaces

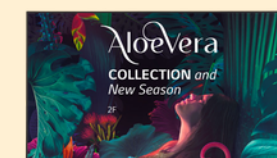
What if students took charge of their learning from home and utilised school time for individualised instruction?

There's no reason to resort to old-fashioned, one-sided approaches when LG monitors, and displays facilitate Adaptive and Asynchronous Learning by providing interactive, easily accessible materials.

With LG 4K IPS Monitor, students are engaged with online lessons and interactive learning at home, while collaborative display tools like LG One:Quick Flex support peer-focused review and discussions at school.



LG CreateBoard
86/75/65/55" UHD
Multi-touch 40 points



UHD TV Signage
86/75/65/55/50/43"



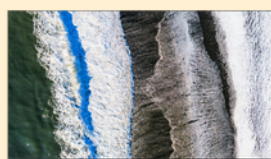
27" UHD 4K IPS Monitor

Multi-purpose Halls

The Multi-purpose Hall, where students once sat through lectures, transforms into a memorable stage for unleashing creativity with LG's wide range of digital solutions.

LG provides a wide range of large-size screen solutions such as LG MAGNIT, LG LED All-in-One and LG LED Bloc, laying out immersive backdrops tailored to each stage setup.

At varied levels of illuminance, LG's brilliant LED technology allows optimal screen clarity, maximising creative uses and versatility of the auditorium.



LG MAGNIT
Micro LED Display
P0.78/0.94/1.25mm



LG LED All-in-One
163/136" FHD



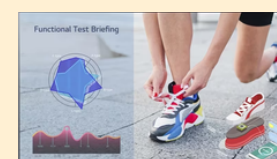
Fine-pitch LED
P0.95/1.25/1.56/1.88mm

Comprehensive Management Spaces

Modern education takes many forms. Whether your school offers asynchronous, flipped, or traditional learning, LG Business Solutions has the reliable and secure products and solutions for teachers, students, and IT products need to thrive.

Keep your school front office, IT department, and campus connected with LG Ergo Dual Monitors and ConnectedCare DMS.

As a cloud service solution for remotely managing displays throughout a school campus, LG's Connected Care™ DMS makes it easy to set up, schedule, and update content across a variety of devices, allowing you to inform students and faculty wherever displays may be on campus.



webOS UHD Signage
86/75/65/55/50/43"



27.6" DualUp Ergo Monitor
SDQHD IPS Display



27" Ergo Dual QHD Monitor
with USB Type-C™ and Daisy Chain

Higher Education

With the advancement of digital technology, the education industry is transforming, and teaching methods are also evolving.

Schools are striving to realise advanced forms of education that enable teachers to better communicate with students and enhance multi-communication between students, eventually leading to greater participation overall.



Large Size Classroom



Lecture Room



Collaborative Spaces



In Between Space



Integrated Classroom

Lecture Room

During lectures, digital displays are an invaluable resource. They help presenters illustrate their points while providing learners with a clear visual framework.

LG provides digital displays adapted for teaching materials and multi-media content, including [LG CreateBoard](#) and [LG LED All-in-One](#).

The unique ergonomic design of the [34" Webcam Monitor](#) makes it easy to adjust for the teacher's preferred position. The 21:9 wide screen can display multiple applications at once to help work productivity.



LG CreateBoard
86/75/65/55" UHD
Multi-touch 40 points



LG LED All-in-One
163/136" FHD



34" UltraWide Monitor
WQHD IPS Display with
Build-in Webcam & Mic



16" UltraPC with IPS
IPS Display & AMD
Ryzen 7000 series

Large Size Classroom

Students should be able to view the lesson materials clearly and efficiently wherever they are seated in a large lecture room or auditorium.

The LG LED Bloc, LG MAGNIT, and LG LED All-in-One range offer enormous screens that present various content in an accessible and easy-to-view manner, which improves students' understanding of the material.



Integrated Classroom

LG gram Laptop and the 16" view Portable Monitor offer a potent combination of lightweight design, durability, long battery life, and powerful processing giving teachers the power to teach from different environments.

LG offers a wide range of technology solutions that work together to set the stage for learning, insight, inspiration, and collaboration. The 24" FHD IPS Monitor with USB Type-C™ and Daisy Chain setup allows teachers to establish a productive workstation by connecting multiple IT devices..

The 4K ProBeam Laser Projectors are real attention-grabbers and ensure that all students can view and immerse themselves in the displayed contentally anywhere.



LG ProBeam

7000 lumen 4K UHD laser Projector



16" gram Ultra-lightweight

16:10 IPS & Intel® Evo

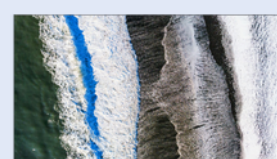


16" +view for LG gram Portable Monitor



23.8" FHD IPS Monitor

Daisy chain & USB Type-C™



LG MAGNIT

Micro LED Display
P0.78/0.94/1.25mm



LG LED All-in-One

163/136" FHD



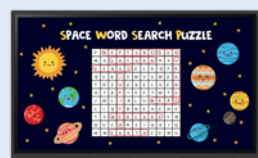
LG LED Bloc

P1.25/1.88/2.5mm

Collaborative Space

Collaborative spaces help students break the mould and explore their creativity through shared learning. Using LG CreateBoard and LG One:Quick Flex, they can jot down ideas and workshop solutions, then download and share their results via personal devices. A portable stand (sold separately) means these learning innovations can be utilised anytime, anywhere.

The SuperSlim Design of the 15.6" Gram is ideal for students' daily campus life. It offers lightweight and impressive battery life* that redefines portable computing.



LG CreateBoard
86/75/65/55" UHD Multi-touch 40 points



15.6" gram SuperSlim
OLED Display & Intel Evo® 13th Gen



LG One:Quick Flex
43" UHD
Multi-touch 10 points

*Screen images simulated
*Stands are sold Separately

In Between Space

Quick and easy access to information is a must for students on the go.

LG ConnectedCare DMS is the solution, a cloud-based service that delivers announcements throughout the school campus.

Remote management enables IT personnel to update, edit, and refresh content at the touch of a button while also making troubleshooting quick and easy to operate.

Ultimately, this connectivity keeps learners plugged into the latest news on campus.



LG ConnectedCare DMS



86" Ultra Stretch



LG CreateBoard
86/75/65/55" UHD Multi-touch 40 points

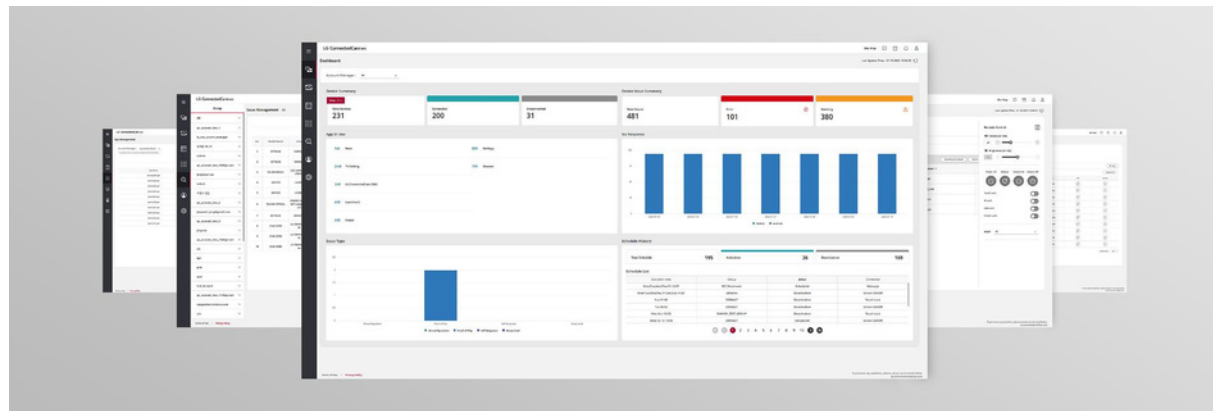


UHD TV Signage
86/75/65/55/50/43"

LG ConnectedCare DMS

MONITORING

LG ConnectedCare DMS makes site visits a thing of the past. With real-time monitoring via an online dashboard, users can perform status updates remotely, which means no more on-site device inspections. The system automatically detects issues and sends email alerts direct to the IT manager, so they can take the appropriate action.



DASHBOARD The LG ConnectedCare DMS dashboard allows you to view and monitor multiple devices at the same time, thereby saving time and boosting efficiency.

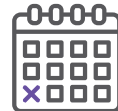
The following features are included:



Summary of connection status and device issues



List of apps frequently used on LG CreateBoard



No response status, filtered by date (webOS, Android)



Checks of recent issue type



Display of scheduling history for the previous 7 days

THRESHOLDS / EMAIL NOTIFICATIONS



The application automatically monitors 11 different items across four independent categories (proof of play, self-diagnosis, misconfiguration, and heavy load). When anomalies are detected, it sends a warning email according to the operational parameters set by the user.

ISSUE MANAGEMENT



The current status of all issues raised can be categorized using a filter feature, enabling more effective management and a swifter response.



DEVICE CONTROL

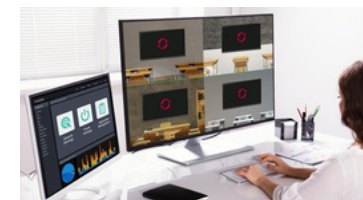
Devices with LG ConnectedCare DMS can be remotely controlled. Thanks to LG ConnectedCare DMS, frequently used device functions such as power on/off, scheduling, brightness, and screen lock functions can be applied remotely, while content such as images, videos, audio messages, and live streaming can also be shared with specific devices. Another key benefit is remote app installation and updates, which helps lessen the need for on-site response.



BROADCAST / ALERT MESSAGE

Messages and a range of other content can be sent from the main systems hub to individual classroom devices, so you can create bespoke groups and deliver messages to the intended recipients. In case of urgent occasions, such as fire drills or school lockdowns, the main system can interrupt the original content with an alert message. Such messages can be distributed across the system, to guide teachers and students in taking the appropriate safety measures.

Schedule list overview:



MULTI-CONTROL

Select multiple devices to be controlled remotely and update their settings all at once. General settings, power settings, application management, and multimedia can all be effectively managed and controlled simultaneously.

Information Display Product Line-up

LG CreateBoard

TR3DK-series

• 86"/75"/65"/55"



- Genuine Touch & Writing Experience
- Easy Connection & Sharing
- Built-in Collaboration Software
- Security & Compatibility
- Remote-control Services

Create, Share & Manage

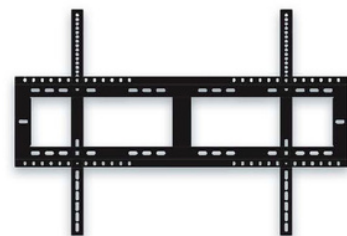
The LG CreateBoard empowers users to Create and Share their ideas with ease. Users can Create engaging content that comes to life on the high-quality display. Sharing is made simple with the ability to cast your screen to the LG CreateBoard. Moreover, LG ConnectedCare DMS provides remote management, scheduling, and alert broadcasting to help Manage the display from anywhere.

Accessories



OPS Player

The LG CreateBoard features an optional Windows slot-in PC, allowing users to easily and conveniently mount OPS desktop at the back of the LG CreateBoard.



Wall Mount

LG offers a wall mount accessory that allows the display to be securely installed in a variety of environments.



Display Mobile Stand

LG offers a mobile cart for the display, allowing users to safely transport the display between various rooms.

* OPS Player, Wall Mount, and Stand are sold separately.

All-in-One



All-in-One LED Display
LAEC Series
| 163", 136"

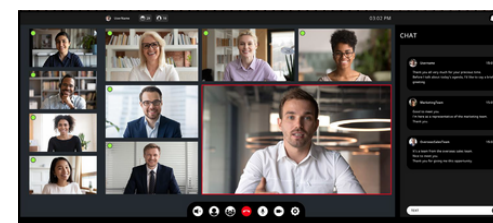
- Pixel Pitch: 1.56 mm; Brightness: 500 nit
- Embedded System Controller; Built-in Speaker
- Dedicated Accessories : Wall Mount, Motorised Stand (Optional)
- * Based on LAEC015-GN2 Specification



Magnit Micro LED Display
LSAB Series
| 007, 009, 015

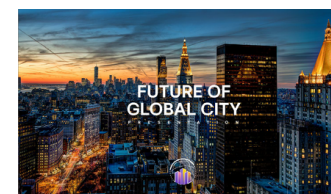
- Micro LED Display
- Pixel Pitch : 0.78 mm
- Cable-less Signal Transmission & Power Docking

* Based on LSAB007 Specification



21:9 All-in-One LED Display
LAED015 Series

- All-in-One LED Screen
- 21:9 Screen Aspect Ratio
- Dedicated Accessories
- Easy Installation Quick Maintenance



Magnit All-in-One Micro LED Display
LAAA015 Series

- All-in-One LED Screen
- Intelligent Processor
- Achieving Deep Black
- Easy Installation Quick Maintenance

Ultra HD



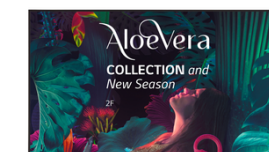
UHD Signage
110/98UM5K

- Brightness(Typ.) : 500 nit
- ULTRA HD (3,840 x 2,160)
- Bezel : 17 mm (Even bezel)
- Built-in Speaker (10 W + 10 W)



UHD TV Signage
UR640S Series
86" 75" 65" 55" 50" 43"

- ULTRA HD (3,840 x 2,160)
- Improved Design with Slim Depth
- webOS-based High Performance
- Easy Content Management / Group Management
- SuperSign Control / CMS Compatibility
- Brightness(Typ.) : 86"/75" (330 nit) 65"/55"/50" (400 nit) 43" (300 nit)



UHD Signage
UH5N Series
65" 55" 49" 43"

- Resolution : 3,840 x 2,160 (UHD)
- Brightness (Typ.) : 500 nit
- Surface Treatment (Haze) : 28 %
- Bezel : 8.9 mm (T/R/L), 12.9 mm (B)
- Interface: HDMI(3)/DP/USB 2.0/RS232C/RJ45/Audio/IR
- webOS Smart Platform



UHD Signage
UL3J-B Series
86" 75" 65" 55" 50" 43"

- Resolution : ULTRA HD (3,840 x 2,160)
- Brightness(Typ.) : 330 nit
- WebOS-based High Performance

Information Display Product Line-up

One:Quick Flex

One:Quick Flex

HT3WJ | 43"



*Stands are sold separately

- All-in-One Display for Simple and Quick Video Call
- Effective Collaboration with Touch and Drawing
- Easy Transport with a Movable Stand
- Screen Rotation and Adjustable Height
- Intuitive UX and Excellent Expandability

Effective Collaboration with Touch and Drawing

With LG One:Quick Flex's 43-inch all-in-one display complete with built-in camera, microphones and speakers there's no need to stress over online meetings and calls and no more inconvenience of connecting to and setting up video conferencing.

An interactive educational tool for the child, with which their drawings and writings from during class can be saved as image files. Participate in online education in real-time and take notes on lesson material.

Write on teaching material and have remote lessons without any additional equipment.

Ultra Stretch



Ultra Stretch
86BH5F

- Brightness(Typ.) : 500 nit
- Aspect Ratio: 58:9
- Bezel: 4.4 mm (L/R), 5.9 mm (T/B)
- Depth: 81.7 mm

LG LED Bloc



LG LED Bloc
LSAA012

- Pixel Pitch: 1.25 mm
- Brightness: 600 nit
- Cable-less Signal Transmission & Power Docking
- AI-powered Image Processor
- Real-time LG ConnectedCare Service



LG LED Bloc
LSAC012/018/025

- Pixel Pitch: 1.25 mm / 1.88 mm / 2.5 mm
- Brightness: 600 nit
- Cable-less Signal Transmission & Power Docking
- Alpha 7 Intelligent Processor
- LG webOS Smart Platform

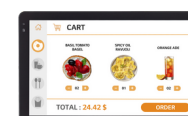
Outdoor



XE Series
XE4F-M | 55" 49"

- Brightness(Typ.) : 4,000 cd/m²
- Interface: HDMI/ DP/HDBaseT/ USB Audio/ RS232C/ RJ45
- Anti-Reflection Coating
- IP56 Design, IK10 Protective Glass

* Based on 55XE4F-M Specification



Touch Open-frame
XF1T-J | 22"

- Brightness : 1,300 nits (Typ. w/Glass)
- IP65 Rated Dust & Waterproof
- 21.5" of Versatile Display Size
- Wide Operating Temperature Range
- webOS Smart Platform
- Built-in Touch Display

Indoor LED



Fine-pitch Essential Series
LSBB009/012/015/018

- Pixel Pitch: 0.94 mm / 1.25 mm / 1.56 mm / 1.88 mm
- Brightness: 600 nit
- Status Indicator of Signal Detection
- Front Serviceability
- Easy-handling Lightweight Cabinet
- Compatibility with LG Software Solutions



Ultra Slim Series
LSCB012/015/018/025

- Pixel Pitch: 1.25 mm / 1.56 mm / 1.88 mm / 2.50 mm
- Brightness: 800 nit
- Ultra Slim Depth
- EMC Class B, BS 476 Part7 Class 1

Compact Series
LSBE Series p1.5/1.8/2.5



- Pixel Pitch : 1.88 mm
- Brightness : 600 nit
- Easy Installation and Maintenance
- Durable Frame Design
- Compatibility with LG Software Solutions
- IP Rating: IP50/ IP50 (Front / Rear)

Versatile Series
LSCA029/039



- Pixel Pitch: 2.97 mm / 3.91 mm
- Brightness: 1,000 nit
- Fast Assembly and Easy Maintenance
- Two Cabinet Options
- 90° Corner Option Available






IT Product Line-up

One:Quick Flex

LG ProBeam BU70QGA

7000 lumen 4K UHD Laser Projector



-  4K UHD Resolution
-  Auto Screen Adjustment
-  SuperSign CMS & Connected Care Supported
-  7000 ANSI Lumens Image Brightness
-  20,000-hours lifespan for long-duration usage

ProBeam for you Education Needs

LG ProBeam provides enhanced functionality for various environments, including offices, galleries, schools, and hospitals. When used as intended, the digital signage projector can also be optimized for more diverse locations such as exhibition halls, auditoriums, and Religious Facilities.

Intuitive and immersive, its versatility makes it highly efficient for a variety of professional uses in most environments, regardless of size and brightness.

Monitors



- 27" UHD 4K IPS Monitor**
27UP850N-W
- 27-inch UHD 4K IPS display
 - DCI-P3 95% (Typ.)
 - VESA DisplayHDR™ 400
 - USB Type-C (Power delivery 90W)



- 27.6" DualUP Ergo Monitor**
28MQ780-B
- 27.6-inch SDQHD (2560 x 2880) Nano IPS Display
 - DCI-P3 98% (Typ.) with HDR10
 - Ergo Stand with C-Clamp



- 27" QHD Ergo Dual Monitor**
27QP88D-BS
- 2 x 27-inch QHD (2560x1440) IPS Displays
 - sRGB 99% (Typ.) with HDR10
 - Ergo Dual Stand with Dual Bar



- 24" HFD IPS Monitor**
24BR650B-C
- 23.8" Full HD (1920x1080) IPS Display
 - Colour Calibrated
 - Daisy Chain & USB Type-C™



- 34" UltraWide WQHD IPS Monitor**
34BQ77QC-B
- 34" WQHD (3440x1440) IPS Display
 - HDR10 & sRGB 99% (Typ.)
 - USB Type-C™

Laptops



- 16" gram Ultra-lightweight**
16Z90R-G
- 16" 16:10 WQXGA (2560 x 1600) IPS Display
 - Windows 11 Home
 - Intel Evo Platform Powered by 13th Gen Intel® Core™ processor



- 15" gram SuperSlim**
15Z90RT-G
- 15.6" Full HD (1920x1080) OLED Display
 - Windows 11 Home
 - Light weight – 990g
 - Intel Evo Platform Powered by 13th Gen Intel® Core™ processor



- UltraPC 16" with IPS Display**
16U70R-G
- 16-inch 16:10 WUXGA 1920 * 1200 IPS display
 - Windows 11 Home (64bit)
 - AMD Ryzen 7000 series processors



- 16" + view for LG gram Portable Monitor**
16MR70
- 16:10 WQXGA (2560x1600) Display
 - DCI-P3 99% (Typ.)
 - USB Type-C™ x 2