



Innovation for a Better Learning Experience
LG Commercial Display Solutions

Education



Download LG Commercial Display Mobile App



More info www.lgcommercial.com
You Tube youtube.com/LGCommercialDisplay

LG may make changes to specifications and product descriptions without notice.
Copyright © 2015 LG Electronics Inc. All rights reserved. "LG Life's Good" is a registered of LG Corp.
The names of products and brands mentioned here may be the trademarks of their respective owners.



School



LG Digital Signage offers the ideal solution for various educational environments. LG's product line-up is optimized for schools and other educational institutions and can effectively deliver educational content and information across your institution or campus. This line-up includes Built-in Touch and Overlay Touch that transform standard signage into touch screens, SuperSign TV software to make content management easy, and the capability to create large Video Walls with stunning picture quality in spacious environments.

Built-in Touch
Ultra HD Large Built-in Touch Display

Centralized Management

Reliable Operation
(Blackening Defect Free, Dust/Humidity Protection)

Application Scenes

Class Room (Inside)



Interactive

4P

LG Digital Signage maximizes two-way communication through touch screen and allows you to add interactivity to standard signage using touch overlay systems.

- Built-in Touch
 - UHD Large Multi-Touch : 84TR3B, 84WT70
 - Multi-Touch : WT30
- Overlay Touch
 - Overlay Touch : KT-T Series
 - Compatible Signage : SM5B/SM5KB, SL5B, SE3B/SE3KB, LS33A

Class Room (Outside)



Small Signage

10P

With its compact screen size, LG's small signage enables you to deliver information anywhere.

22SM3B



- 1 Interactive
- 2 Small Signage
- 3 Video Wall
- 4 SuperSign™ TV
- 5 SuperSign™ Software

Auditorium



Video Wall

8P

Video Walls maximize immersion by providing huge screens in large spaces, increasing your chances of attracting customers.

- Narrowest Bezel VH7B
- Super Narrow Bezel LV77A, LV75A, LV35A
- High Brightness WV70MS, WV50MS

Cafeteria



SuperSign™ TV

11P

SuperSign™ TVs effectively manage content and deliver various information.

LX540S
LX530S

IT Room



SuperSign™ Software

12P

The SuperSign™ software line-up allows you to manage the firmware and content on displays all around campus from a centralized location.

SuperSign Lite/W
SuperSign C
SuperSign M
SuperSign N

Interactive white board to maximize learning experience

Interactive

Along with its excellent information delivery capabilities, the interactive line-up provides immersive picture quality and performance optimized for learning environments to create a better experience and encourage active participation.



Built-in Touch



IPS 4K 4K Upscaler LARGE SCREEN 10 Point Multi-Touch

84TR3B

- 84"
- Built-in Multi-Touch
- Ultra HD : 3,840 x 2,160
- 4K Upscaler
- Anti-glare
- 10 Point Multi-Touch
- Ghost-Free Touch (IR Spread)
- Media Player Ready (MP700, MP500)
- SuperSign C, IWB Software



IPS 4K LARGE SCREEN 10 Point Multi-Touch

84WT70

- 84"
- Built-in Multi-Touch
- Ultra HD : 3,840 x 2,160
- Anti-glare
- 10 Point Multi-Touch
- Ghost-Free Touch (IR Spread)
- Media Player Ready (MP700, MP500)
- SuperSign C, IWB Software



10 Point Multi-Touch

WT30

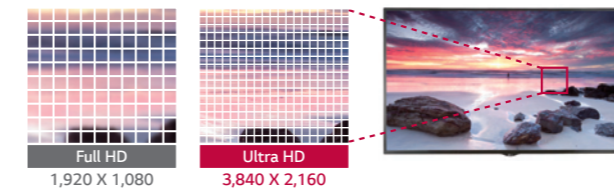
- 55", 47", 42"
- Built-in Multi-Touch
- Full HD : 1,920 x 1,080
- 10 Point Multi-Touch
- Landscape & Potrait Mode
- 15mm Even Bezel
- SuperSign Lite/W/C

Key Features

Ultra HD Large Screen

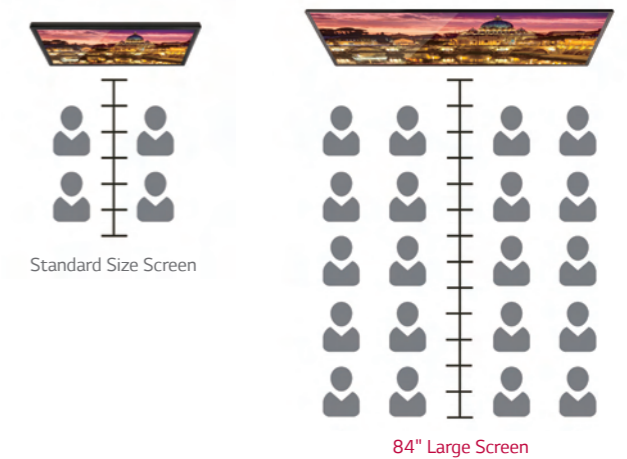
Ultra HD Resolution (3,840 x 2,160)

The large Ultra-HD screen delivers an immersive viewing experience.



84" Large Screen

The large screen and wide viewing angles create effective learning environments in which audiences can view the screen from any angle.



4K Upscaler

LG's up-scaling and super resolution technologies enhance the quality of FHD content to near UHD levels.



Highly Reliable Touch Experience

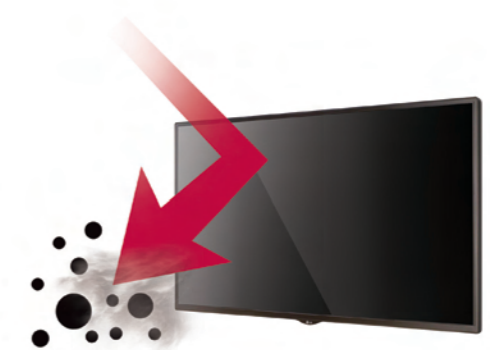
5mm Protection Glass

The 5mm protection glass on the 84TR3B provides durability against external impacts that may occur in educational institutions.



Built in Touch

The touch overlay seamlessly attaches to the screen, ensuring that no dust can get between it and the screen to cause a malfunction.



Overlay Touch



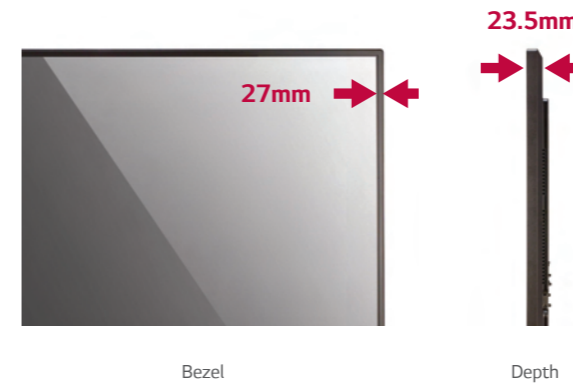
Key Features

Multi-Touch with Slim Bezel

The multi-touch function can be added to existing displays without affecting the sleek, clean look of the bezel.

10 Point Multi-Touch

The multi-touch can recognize up to 10 touches at once to provide a more realistic experience without the need for a separate pen.



KT-T Series

- 65", 55", 49", 43", 32"
- 10 Point Multi-Touch
- 27mm Even Bezel

Compatible Products

- KT-T650 (65") : 65LS33A
- KT-T550 (55") : 55SE3B, 55SM3B, 55SL5B, 55SM5B
- KT-T490 (49") : 49SE3B, 49SM3B, 49SL5B, 49SM5B
- KT-T430 (43") : 43SE3B, 43SM3B, 43SL5B, 43SM5B
- KT-T320 (32") : 32SE3B, 32SM5B

* 32SL5B not compatible with touch overlay

Compatible Signage



Standard Performance SM5B/SM5KB

- 55", 49", 43", 32"
- Brightness : 450cd/m², 400cd/m² (32")
- Quad Core SoC Built-in
- 24/7 Operation
- Landscape & Portrait Mode
- Remote Control (RS232C, RJ45)
- Detachable Logo, Cable Management, Built-in IR Receiver
- Built-in Wi-Fi, Soft AP, BEACON
- OPS Kit / HDBaST Box
- SuperSign Lite/W/C
- * SM5KB : Built-in Speaker (10W x 10W)



Standard Performance SL5B

- 55", 49", 43"
- Brightness : 450cd/m²
- 18/7 Operation
- Landscape & Portrait Mode
- Remote Control (RS232C, RJ45)
- Detachable Logo, Cable Management, Built-in IR Receiver
- Wi-Fi Dongle Ready, SNMP
- SuperSign Lite/W/C



Standard Performance SM3B

- 55", 49", 43"
- Brightness : 350cd/m²
- Quad Core SoC Built-in
- 18/7 Operation
- Landscape & Portrait Mode
- Remote Control (RS232C, RJ45)
- Detachable Logo, Cable Management, Built-in IR Receiver
- Built-in Wi-Fi, Soft AP, BEACON
- OPS Kit
- SuperSign Lite/W/C



Standard Essential SE3B/SE3KB

- 55", 49", 43", 32"
- Brightness : 350cd/m²
- 18/7 Operation
- Landscape & Portrait Mode
- Remote Control (RS232C, RJ45)
- Detachable Logo, Cable Management
- Wi-Fi Dongle Ready, SNMP
- SuperSign Lite/W/C
- * SE3KB : Built-in Speaker (10W x 10W)



Standard Essential LS33A

- 65"
- Brightness : 350cd/m²
- 16/7 Operation
- Landscape & Portrait Mode
- Remote Control (RS232C, RJ45)
- Embedded Media Player
- SuperSign Lite/W/C

Immersion with overwhelming scalability

Video Wall

With its ultra-slim bezel, LG video walls generate impressive images and provide incredible expandability and visual immersion to suit various venues, such as auditoriums and concert halls.



Key Features

Ultra Narrowest Bezel*

The ultra narrowest bezel video wall enables the overall image of video wall to be much closer to a single screen.

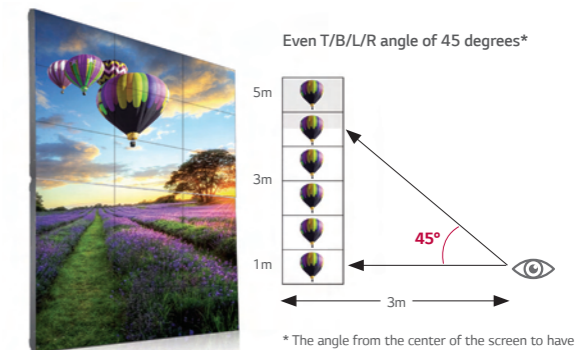
*VH7B



Bezel to Bezel
Less than 2.0mm

Clear Viewing Angle

LG Video Wall ensures clear picture quality even when installed in stacks of more than four. This is very favorable for the quantity of video walls installed in large spaces.



Narrowest Bezel

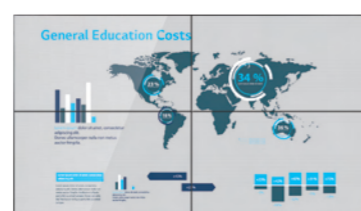
Super Narrow Bezel



VH7B

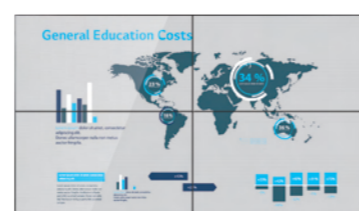
- 55"
- Quad Core SoC built-in
- Brightness : 700cd/m²
- Bezel to Beze : Less than 2.0mm
- Clear Viewing Angle
- SoC Based Sync-Playback
- Image Gap Reduction
- LAN Daisy-Chain
- OPS Compatible
- 24/7 Operation
- Landscape & Portrait Mode
- SuperSign Lite/W/C

*Available in September 2015



LV77A

- 55"
- Brightness : 700cd/m²
- Bezel to Bezel : 3.5mm
- 24/7 Operation
- Landscape & Portrait Mode
- Remote Control (RS232C, RJ45)
- Shine-Out (Semi-Outdoor) / Anti-Glare
- DP1.2 Daisy-Chain
- SuperSign Lite/W/C

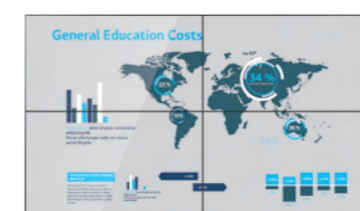


LV75A

- 55"
- Brightness : 700cd/m²
- Bezel to Bezel : 3.5mm
- 24/7 Operation
- Landscape & Portrait Mode
- Remote Control (RS232C, RJ45)
- Shine-Out (Semi-Outdoor) / Anti-Glare
- DP1.2 Daisy-Chain
- SuperSign Lite/W/C

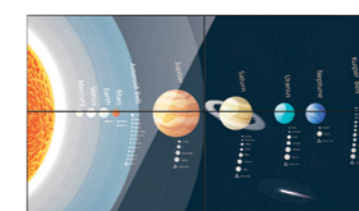
Super Narrow Bezel

High Brightness



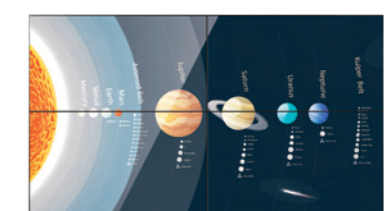
LV35A

- 55", 47"
- Brightness : 500cd/m² (55"), 450cd/m² (47")
- Bezel to Bezel : 3.5mm (55"), 4.9mm (47")
- 24/7 Operation
- Landscape & Portrait Mode
- Remote Control (RS232C, RJ45)
- SuperSign Lite/W/C



WV70MS

- 55"
- Brightness : 800cd/m²
- Bezel to Bezel : 5.3mm
- 24/7 Operation
- Landscape & Portrait Mode
- Remote Control (RS232C, RJ45)
- Shine-Out
- SuperSign Lite/W/C



WV50MS

- 47"
- Brightness : 800cd/m²
- Bezel to Bezel : 4.9mm
- 24/7 Operation
- Landscape & Portrait Mode
- Remote Control (RS232C, RJ45)
- Shine-out
- SuperSign C

Mini display with excellent usability
Small Signage

The small signage allows you to easily convey information such as agendas or class programs anywhere using only a network connection.

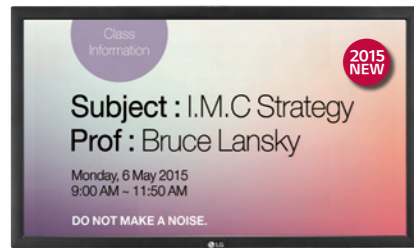


Easy and convenient content management
SuperSign™ TV

You can easily create and manage content to suit your campus, and even use it for advertisements or menus in restaurants and cafeterias.



Small Signage



webOS 2.0

22SM3B

- 22"
- Brightness : 250cd/m²
- Quad Core SoC Built-in
- 16/7 Operation
- 16.3mm Even Bezel
- Landscape & Potrait Mode
- Built-in Wi-Fi, Soft AP, BEACON
- SuperSign Lite/W/C

Key Features

Quad Core SoC*

The High Performance SoC can execute several tasks at the same time and provide smooth content playback.



*SoC : System-on-Chip

webOS 2.0

The webOS 2.0 platform provides easy and convenient tools to create content. LG's SDK* and technical support make content development and management easier than ever before.



<http://developer.lge.com/webOSSignage>

*Software Development Kit

SuperSign™ TV



LX540S

- 60", 55", 49"
- SuperSign Lite/W/C
- 350cd/m² (60"), 330cd/m² (55"), 300cd/m² (49")
- Built-in Speakers and TV Tuner
- Wi-Fi Dongle Ready, USB Plug & Play, Fail Over
- Welcome Screen/Video, Lock Mode, One Channel Map, IR Out(RS-232C), USB Cloning, USB Auto Play Back
- * Line-up Differ by Region



LX530S

- 42", 32H"
- SuperSign Lite/W/C
- Brightness : 300cd/m²
- Built-in Speakers and TV Tuner
- Wi-Fi Dongle Ready, USB Plug & Play, Fail Over
- Welcome Screen/Video, Lock Mode, One Channel Map, IR Out(RS-232C), USB Cloning, USB Auto Play Back
- * Line-up Differ by Region

Key Features

Simple Connectivity

With its built-in SoC and Wi-Fi dongle support, LG signage is easy to install. Furthermore, LG signage doesn't need external media players or Ethernet/RS232C cables, so its total cost of ownership(TCO) is significantly less than competing products.

Fail Over

The USB fail over function enables content to be displayed without dead spots when no input signal is available. It supports files in JPG format with a maximum file size of 10MB.

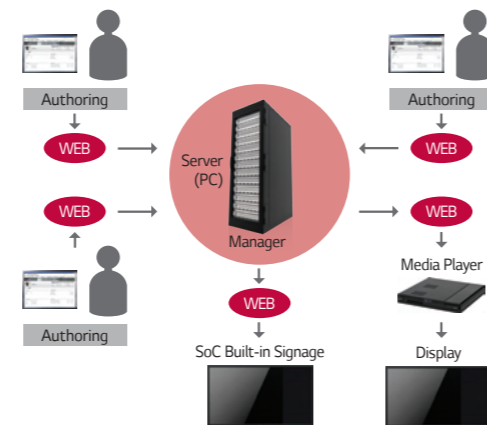
Content Management

The SuperSign™ Solution includes the SuperSign Lite, W, and C software to provide digital media editing, scheduling, distribution, and management capabilities. By installing SuperSign W on a server, you can manage up to 1000 TVs.

WEB-BASED CONTENT AUTHORIZING AND OPERATION SOLUTION PLAYER

SuperSign™ Lite

- Offered as a bundle with LG's external player and SuperSign embedded player
- Connections up to 50 clients
- Solution suitable for SMB
- Supports dual content editor in both PC app and web



You can easily create, schedule and distribute the contents you want with various templates provided by SuperSign™ Lite and SuperSign™ W.

SuperSign™ W

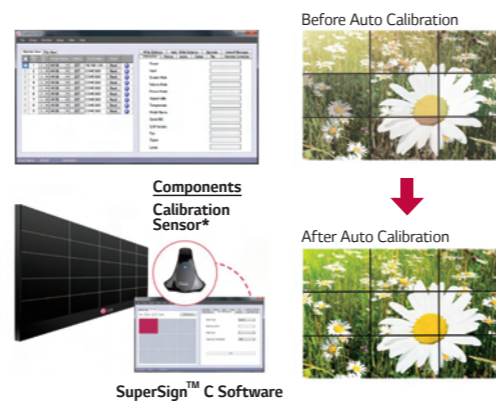
- Licensed version
- Connections up to 1,000 clients
- Solution suitable for Enterprise
- Multi-User Account Management
- Supports dual content editor in both PC app and web

MONITOR CONTROL & WHITE BALANCE CALIBRATION

SuperSign™ C

- Remote Monitor Control Solution
- Enhanced White Balance Calibration
 - Manual controls
 - Intuitive UX for efficient workflow
 - Fast calibration and gamma table creation

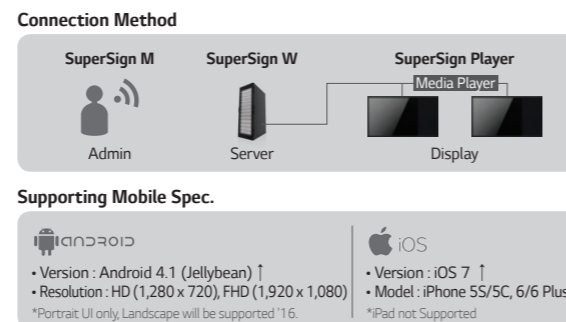
SuperSign C allows to control one or more monitors remotely via network and RS232 serial. To ensure the best optimized wall solution, Auto White Balance feature makes video wall be adjusted easily and intelligently.



CONTENT MANAGEMENT SOFTWARE BY MOBILE DEVICE

SuperSign™ M

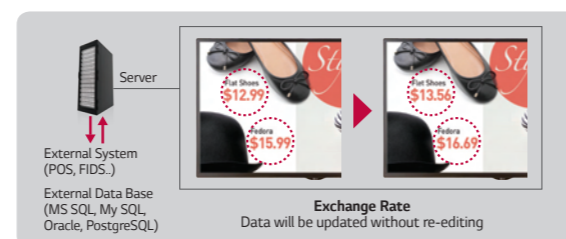
- SuperSign™ M works by the server connection method
- Edits and makes content scheduling and distributes it via mobile



WEB BASED EXTERNAL DATA CONNECTION

SuperSign™ N

- Web based application
- Pull the external data source to SuperSign™ content



LG Interactive White Board Software

- Application software for school and business
- Integration of board page and application
- Character recognition function
- GUI for FHD/UHD resolution
- Compatible Base Models : 84TR3B, 84WT70, KT-T650

OS	Windows XP / Vista / 7
DRAWING	Pen / Brush / Spray / Eraser / Shape
EDIT	Copy / Paste / Clone / Undo / Redo
DATA FORMAT	Intrinsic / PDF / JPG
MEDIA	Image, Audio, Video
APP LINKAGE	PowerPoint, Excel, Word, Internet Explorer
E-MAIL	Share writing/drawing data via e-mail
SCREEN SPLIT	2 horizontal Screens
USAGE CONVENIENCE	Preview / Navigation / Screen Lock
CAPTURE	Full / Window / Automatic Copy & Paste
RECORDING	Full / Window / Rectangle
ZOOM	In / Out (100% ~ 400%)
WRITING SPACE RESIZE	Resize From 1,920 x 1,080 to 3,840 x 2,160

PREMIUM DOCKING-TYPE PLAYER

MP700

- Intel® Core i5-3610ME 2.7 GHz (Dual Core)
- Intel® Core i7-3610QE 2.3 GHz (Quad Core)
- Mobile Intel® QM77
- Windows Embedded Standard 7 Professional (64bit)
- Full HD x 4 or Ultra HD x 1
- Maximum Resolution 3,840 x 2,160 @ 30 Hz (DP)
- Maximum Resolution 1,920 x 1,080 @ 75 Hz (RGB)



PREMIUM DOCKING-TYPE PLAYER

MP500-B

- Intel® Core i5-520M Processor 2.40 GHz (Dual Core)
- Windows Embedded Standard, Windows7 Embedded
- Full HD x 2
- Maximum Resolution 2,560 x 1,600 @ 60 Hz (DP)
- Maximum Resolution 1,920 x 1,200 @ 60 Hz (HDMI)



EXTERNAL FANLESS COMPETITIVE PLAYER

MP500-F

- Intel® Celeron Processor N2930 1.83GHz/ 2.16GHz (Burst) (Quad Core)
- Windows Embedded Standard 7 Professional (32bit)
- Full HD x 2
- Maximum Resolution 1,920 x 1,080 @ 60 Hz (DP)

