

## CHAPTER 2

---

### 2.1.1 Model Management (GP)

- Menu Location : Product > Model > Model Management







### 2.1.1 Model Management



## 2.1 Model

### 2.1.1 Model Management

#### Explanation(continued)

---

- ⑤ Web Contents Edit Button
  - Once clicked a WCMS page is opened where you can edit content of selected model
- ⑥ Classification Flag
  - Once clicked "Model Basic info Layer Popup" opens where you can edit Classification Flag.  
(In case Classification Flag is registered it is marked "Y")
- ⑦ WTB Flag
  - Able to select WTB flag state on search result grid (Same for "Model Status" column)
- ⑧ Label ID 1 ~3
  - Label Icon Id information registered in the model. You can edit it in the Model Default Information Layer pop-up  
(when you click the model name)
- ⑨ NEW Button
  - Once clicked "Model Basic info Layer Popup" opens where you can register a new model
- ⑩ SAVE TO STG Button
  - Once clicked selected model information is saved on STG.
- ⑪ SAVE TO PROD Button
  - Once clicked selected model information is saved on PROD. An alert message asking whether to edit model content pops up. In case, OK is selected moves to WCMS page where you can edit model contents.
- ⑫ EXCEL DOWNLOAD Button
  - Before search result is retrieved, button is deactivated
  - Once the button is clicked after search result has been retrieved, search result is downloaded as an excel file.  
(File name: {Date}\_STG\_{SITE}\_model\_list.xls)
  - Note
    - : When downloading a STG excel file- menu name(date of download)
    - : When downloading PROD excel file, PROD\_menuname\_(dateofdownload)



2.1 Model

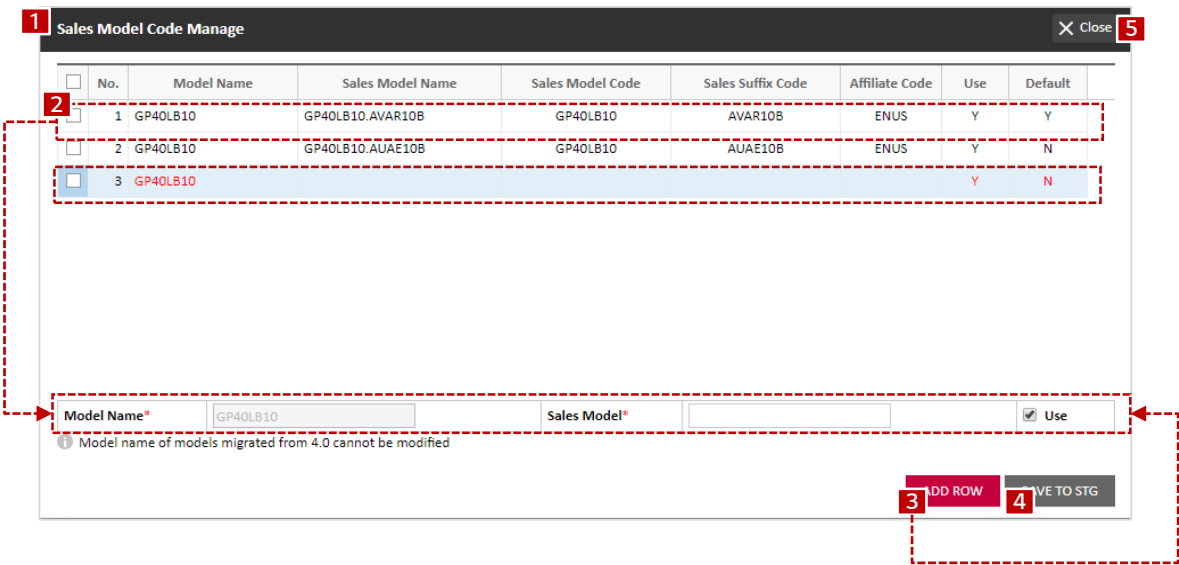
2.1.1 Model Management

2.1.1.1 Sales Model Code Mange Layer Popup

Definition

Layer popup provided when clicking on Sales Model of search result  
Multiple Sales Model Code can be added to one model, and Use Flag of each Sales Model Code can be selected  
Sales Model Code, Model Name registered for this model can be modified on this Layer popup

Explanation



- ① Layer Popup provided when clicking on Sales Model of model search result
- ② Sales Model List
  - Information of Sales Model Code.Suffix registered for the model is shown
  - When a row is selected, Model Name, Sales Code of the model is shown and depending on default flag value information can be modified
    - : Default Flag – In case flag is Y, Model Name, Sales Model can be modified. Use column cannot be modified
    - : Default Flag – In case flag in N, Model Name cannot be modified, Sales Model , Use column can be modified
  - Note : For the models registered in 4.0, Model Name cannot be modified (where mig\_data\_flag column is 'Y' in mkt\_model\_m table)
- ③ ADD ROW button
  - Once clicked a row is added to the list. Sales Code should be additionally registered in below input box.
  - Sales Model Code.Suffix registered for this model cannot be used when adding a Sales Code.
  - Note : Only Sales code registered in another model can be used.
  - Check Sales Model Code consistency when mouse cursor moves out of Sales Model input Box
- ④ SAVE TO STG button
  - selected items are saved on STG once button is clicked.
- ⑤ Close button
  - Layer Popup closes without saving edited information.



## 2.1 Model

## 2.1.1 Model Management

## 2.1.1.2 Model Basic info Layer Popup

## Definition

New Model Registration – Provided by clicking NEW button on Model management.

Modify Model Information – Model Basic information is displayed as a popup by clicking Model Name or Classification Flag.

When modifying model information Site, Model Type, Category, Sales Model, Model Name, Additional Product Name, URL cannot be modified.

## Explanation

The screenshot shows a 'Model Basic info' popup form with the following numbered annotations:

- 1** Model Basic info (Header)
- 2** Site\* (Radio buttons: B2C, B2B)
- 3** Model Type\* (Radio buttons: PDP, ADP, Add-on Bundle, PTO Bundle)
- 4** Category\* (Dropdown menu with 'Choose a state' and 'Use' checkbox)
- 5** Sales Model or Item No.\* (Text input)
- 6** Model Name\* (Text input)
- 7** Additional Product Name (Text input)
- 8** URL\* (Text input with a note: 'URL is created based on the following rule: lg-{ModelDisplayName}-{AdditionalProductName}')
  - 9** MSRP (Text input with a note: 'Decimal Digit or "." Only ex)1399.99')
  - 10** E-commerce Use (Checkbox)
  - 12** Google Merchant Title (Text input)
  - Google Merchant Description (Text input)
- 11** OBS URL (Text input)
  - Target (Radio buttons: SELF, NEW)
- 13** See Retailer for Pricing\*(B2C Only) (Radio buttons: Y, N)
- 14** Inquiry to Buy Use\*(B2B Only) (Radio buttons: Y, N)
- 16** ThinQ Brand Fl: (Radio buttons: Y, N)
- 18** Where to Buy Use\*(B2C Only) (Radio buttons: Where to Buy, External Links, None)
  - CTA Name (Dropdown menu with 'Choose a state')
  - Target Link (Text input)
  - Target (Radio buttons: SELF, NEW)
- 15** Product Enquiry Use\*(B2C Only) (Radio buttons: Y, N)
- 17** Signature Brand Flag\*(B2C Only) (Radio buttons: Y, N)
- 19** EAN Code (Text input)
  - EAN Dealer Name (Text input)
- 20** WTB SUB ID (Text input)
- 21** Model Status\* (Dropdown menu with 'Choose a state')
- 22** Energy Category (Radio buttons: Oven, Dryer, Space and Combination heater (AWHP), Washing Machine, Refrigerator, Packages of solar device and heater, Water heater, Water tank, Air Conditioner up to 12KW, Washer Dryer, Display(TV, Monitor), Dish Washer, None)
- 23** Energy Class (Radio buttons: A+++, A++, A+, A, B, C, D, E, F, G, None)

- ① Model Basic info Layer Popup  
- On this popup basic information of model can be registered and modified.
- ② Site Flag  
- Select site type to register the model (Once model is created this cannot be modified)  
Note : No matter of users authority (B2B/B2C/CS) any site type can be selected  
: In case site is selected as B2B, Bundle Model Type is not selectable
- ③ Model Type (In MANAGEMENT/Setup/Preference Management, if obs\_bundle\_flag\_use is Y, PTO Bundle expose.)  
- Model type selection (Once created cannot be modified)  
Note: In case Add-on Bundle, Sales Model & Item No. is deactivated. In case PTO Bundle, Sales Model & Item No. is activated.  
Add-on Bundle type can only show MSRP, and PTO Bundle type can show both MSRP and OBS price if MSRP and OBS price are set.  
In case ADP, Sales Model & Item No. filed is optional for only PL, UK, CAC\_EN, EG\_AR, EG\_EN locales.
- ④ Category  
- Category registered for selected site is shown as options in the dropdown (Once model is created this cannot be modified)  
- Use : Once unchecked not display on page (default : Y)
- ⑤ Sales Model or Item No.  
- Input Sales Model Code of the model to register (Sales Code can be duplicate)  
- Input Item No. for OMV models that do not have Sales Model Code  
Note : Validation of existence of Sales Model Code or ITEM No. for MDMS or OBS  
If inputted Sales Model Code is used in another model Alert is shown. Able to use by clicking "OK" button.  
If this field is optional, Part no can be registered. (Model Type : ADP / Locale Code : PL, UK, CAC\_EN, EG\_AR, EG\_EN)



## 2.1 Model

## 2.1.1 Model Management

## 2.1.1.2 Model Basic info Layer Popup

## Explanation(continued)

- ⑥ Model Name can be duplicate
- ⑦ Additional Product Name(Optional)  
- Once registered comes at the end of the URL(/locale/{Category}/Model Name-Additional Product Name)
- ⑧ URL  
-The selected Category information and the entered Additional Product Name will be displayed. (/locale/{Category}/Model Name-Additional Product Name)  
Note : Sales Model/Model Name can be duplicate. In case URL is duplicate alert is displayed.
- ⑨ MSRP  
- Only numeric values are valid  
- Error message is shown for text and special characters (Validation Check on cursor out event)
- ⑩ E-commerce Use  
- In case unchecked, "ADD TO CART" is not displayed on front page(default : unchecked)  
Note : Even if OBS Flag is "Y", it is not shown if E-commerce use flag is "N"
- ⑪ OBS URL  
- Display the area when country has registration of BUY\_NOW\_FLAG=Y in Management > Setup > Preference Management  
- Display 'Buy Now' button in Front when E-commerce Use is checked, and the URL is entered in the item
- ⑫ Google Merchant  
- E-commerce Use check "Y", to activate input area.  
- Title and Description to sent to Google Merchant Center Feed can be entered.
- ⑬ See Retailer for Pricing(\*B2C Only)  
- Select whether to display price on page or not (default : N)  
- If value is "Y", "See Retailer for Pricing" is shown on price area (CTA remains same)  
Note : If this Flag is Y, MSRP, OBS, Promotion Price are all not displayed.
- ⑭ Inquiry to Buy Use\*(B2B Only)  
- Default : Y  
- If this is selected as N, Inquiry to Buy button in Front PLP/PDP is not displayed.
- ⑮ Product Enquiry Use(B2C Only)  
- Display only in IN  
- Default : Y  
- If N is selected, Product Enquiry button is not displayed in Front > PDP.
- ⑯ ThinQ Product\*  
- Default : N  
- If this is selected as Y, ThinQ product flag on front PLP/PDP is displayed.  
\* Refer to 'Page 10'
- ⑰ Signature Product\*(B2C Only)  
- Default : N  
- If this is selected as Y, Signature product flag on front PLP/PDP is displayed.  
\* Refer to 'Page 10'
- ⑱ Where to Buy Use Flag(\*B2C Only)  
- Where to Buy : Default  
- External Link: As selected, CTA / Target Link / Target can be selected and input  
- None : Do not use WTB Button.
- ⑲ EAN Code / EAN Dealer Name  
- EAN Code and EAN Dealer Name information of model can be registered and modified.  
- EAN Code: Only 8 or 13 decimal digit values are valid.
- ⑳ WTB SUB ID  
- Display only in DE  
- Input WTB SUB ID to use specific value of WTB script.
- 21 Model Status  
- Selectable between Active / Suspended / Discontinued
- 22 Energy Category  
- Selection of product energy rating categories(default: None)
- 23 Energy Class  
- Product energy class selection (default: none)  
- Select a rating, it is displayed as a label on PLP/PDP.



2.1 Model

- 2.1.1 Model Management
- 2.1.1.2 Model Basic info Layer Popup

Explanation(continued)

Model Basic info

Close

24

Label

No.	Seq*	Label Image	Label Upload	Label Name*	Alt Text	Label ID	Title*	FontStyle		Linked	Link Target	Label Type*	MDMS Category*	Start Date	End Date
								Bold	Italic						
1	1		Add Label pool					N	N						
2	2		Add Label pool					N	N						
3	3		Add Label pool					N	N						

25

Product Tag(Product tags can be set for up to one year.)

Tag	Date	Use
Choose a state	yyyy-mm-dd ~ yyyy-mm-dd 1M 3M 6M	
Choose a state	yyyy-mm-dd ~ yyyy-mm-dd 1M 3M 6M	

26

Classification Flag

Please, select an appropriate classification flag for each level.(Multiple Flags can be registered)

No.	Level ID*	Level 1*	Level 2*	Level 3	Use*
1	B2C				Y

ADD ROWDELETE ROW

27

Available Countries

Please, select an appropriate Available Countries for each level.(Multiple Flags can be registered)

No.	Country*	Use*
1		Y

ADD ROWDELETE ROW

28

WTB Online Retailer

No.	Locale Code*	Retailer Name*	Retailer Home Link URL*	Retailer Image*	Image Alt Text*	Product Link URL	Use
-----	--------------	----------------	-------------------------	-----------------	-----------------	------------------	-----

ADD ROWDELETE ROW

29

SAVE TO STG

- 24 Label
- Fixed 3 label icon lists (lists cannot be added or deleted)
  - Label icons can be registered directly or configured using a label icon pool.
  - Registering a label icon directly, you can configure and select whether to use it as a label image, label name, alternative text, label ID, title, Font Style, Linked, Link Target, label type, MDMS category, start date, and end date.. (If the period is set in the Start date and End date, it is provided to the PLP only during that period.)
  - Registering directly, it is automatically saved as a label icon pool.
  - Only row data is deleted when "DELETE ROW" button is clicked



## 2.1 Model

### 2.1.1 Model Management

#### 2.1.1.2 Model Basic info Layer Popup

## Explanation(continued)

### 25 Product Tag(Optional)

- Selected 2 Tag will be shown on PDP, 1 Tag on PLP(One tag is exposed to in the order of exposure defined in the Front end in the PLP)
- Useable Tag : Coming Soon, New, Sales, Recommend(Displayed on the front page in the order set)
- Maximum duration of 1 year can be set
- When the 1M/2M/6M button is selected, the 1M/2M/6M period is set based on today's date.

### 26 Classification Flag

- Row is added when clicking the "ADD ROW" button / Row is deleted when clicking the "DELETE ROW" button
- Level ID : Only one value can be selected between B2C / B2B
- Level 1, 2, 3 : Options registered in the Master are selectable (registered in Classification Management.
- Maximum up to 50 Classification Flag can be input.

### 27 Available Countries

- Expose PLP/PDP sellable countries(applicable country: PA/AE\_EN/AE\_AR)
- Row is added when clicking the "ADD ROW" button / Row is deleted when clicking the "DELETE ROW" button
- Cannot select duplicate countries (choose duplicate countries, system alert message will be sent)

### 28 WTB Online Retailer

- Row is added when clicking the "ADD ROW" button / Row is deleted when clicking the "DELETE ROW" button
- WTB Online Retailer can be configured and selected whether to use Retailer Name, Retailer Home Link URL, Retailer Image, Alt Text, Product Link by country.
- For country NL, It is necessary to select the location to be exposed to the front by selecting Local code as NL or NL\_BE

### 29 SAVE TO STG button

- When creating a new model, Model ID and Data is created on STG based on inputted values.
- When modifying existing model, modified information is saved on STG.



2.1 Model

2.1.1 Model Management

2.1.1.2.1 Label Icon Pool Layer Popup

Explanation(continued)

Model Basic info

Label

No.	Seq*	Label Image	Label Upload	Label Name*	Alt Text	Label ID	Title*
1	1		Add Label pool				
2	2		Add Label pool				
3	3		Add Label pool				

Label Icon Pool

2

Label Type Choose a state Label ID Label Name

3

Title MDMS Category Choose a state SEARCH

3

No.	Label Image	Label Name	Alt Text	Label ID	Title	FontStyle	Linked	Link Target	Label Type	MDMS Category	Start Date	End Date	Use
						Bold Italic							
5		Test_sh_005	Ultimate 4K Ultra HD pictur	IC000000105	Ultimate 4K Ultra HD picture quality enh	N N			Feature	Commercial Display_Signage			Y
6		Test_sh005	8K SIGNATURE OLED TV	IC000000103	8K SIGNATURE OLED TV	N N			Feature	TV			Y
7		Test_sh_006	Perfect viewing angle	IC000000102	Perfect viewing angle	N N			Feature	TV			Y
8		Test_sh_003	CES Award 2020	IC000000100	CES Award 2020	N N			Award	Airconditioner			Y

4

SELECT

- ① Add button
- Label Icon Image upload, input information the line.  
(Updated information can be check & modification in Label icon pool)
- ② Label Pool button
- Once clicked, "Label Icon Pool Layer Popup" opens where Label Icon can be Selected.
- ③ Label Icon Search Box
- Search condition navigator  
- By clicking "Search" button with search condition set, Label Icon are searched based on STG data
- ④ Label Icon List
- Registered label icons Information and a list of are displayed  
- Which is saved at Label Icon Pool to PROD
- ⑤ Select button
- Check in the list check box and register in "Model Basic Info > Label" when the select button is clicked  
- Cannot check more than two



2.1 Model




2.1.1 Model Management

2.1.1.2 Model Basic info Layer Popup

Explanation(continued)

Model Basic info


Label

1	No.	Seq*	Label Image	Label Upload	Label Name*	Alt Text	Label ID	Title*	FontStyle		Linked	Link Target	Label Type*	MDMS Category*	Start Date	End Date
									Bold	Italic						
<input type="checkbox"/>	1	1		<input type="text" value="Label pool"/>	Test_sh005	8K SIGNATURE OLED TV	IC00000103	8K SIGNATURE OLED TV	N	N			Feature	TV		
<input type="checkbox"/>	2	2		<input type="text" value="Label pool"/>	Test_sh_006	Perfect viewing angle	IC00000102	Perfect viewing angle	N	N			Feature	TV		
<input type="checkbox"/>	3	3		<input type="text" value="Label pool"/>	Test_sh_005	Ultimate 4K Ultra HD pictur	IC00000105	Ultimate 4K Ultra HD picture quality enh	N	N			Feature	Commercial Display_Signage		

UI example on the web

NEW

36



16

17

LG SIGNATURE

LG ThinQ

86"

75"

65"

55"

+

6

LG ZX 88 inch 8K SIGNATURE OLED TV

OLED88ZX9LA

★★★★★ (2)

Product Sheet

CES 2020 Innovation Awards

2020 AVA Digital Award

iF Product Design Award 2020

VIP PRICE

\$3,099.99

\$3,499.99

Save \$400.00

OLED TV Deals


WHERE TO BUY

WHERE TO BUY

ADD TO COMPARE

Rebate up to \$350

NEW



77"

65"

55"

LG WX 65 inch 4K Smart OLED TV

OLED65GXPUA

★★★★★ (0)

Product Sheet

2020 AVA Digital Award

iF Product Design Award 2020

Award-winning smart platform: LG webOS

VIP PRICE

\$3,099.99


\$3,499.99

Save \$400.00

WHERE TO BUY

WHERE TO BUY

ADD TO COMPARE



77"

65"

55"

LG CX 77 inch 4K Ultra HD Smart OLED TV

OLED77CX6LA

★★★★★ (2)

Product Sheet

SELF-LIT LG OLED: the most innovative technology in TV

Ultimate 4K Ultra HD picture quality enhanced by the LG α9 Gen 3 processor

Dolby Atmos giving immersive three-dimensional sound

\$3,099.99

\$3,499.99

Save \$400.00

WHERE TO BUY

WHERE TO BUY

ADD TO COMPARE

- ①

Model Basic Info > Label

- Register 3 label icons and expose to PLP
- ②

Product List (GPC0007 Products List / GPC0026 Promotion - Product ListComponent)

- Display up to 1 line of text in Mobile

- Label Icon area : output max 3

- output order : Label icon → OBS Delivery Message → Bullet Point (Feature)

(If the output item is missing or insufficient, it will be provided sequentially.)

- Note

: Provides use availability on GPC0007 and GPC0026 components.

If this is selected as 'Not use', Label Icon area in Front PLP is not displayed.



## 2.1 Model

## 2.1.1 Model Management

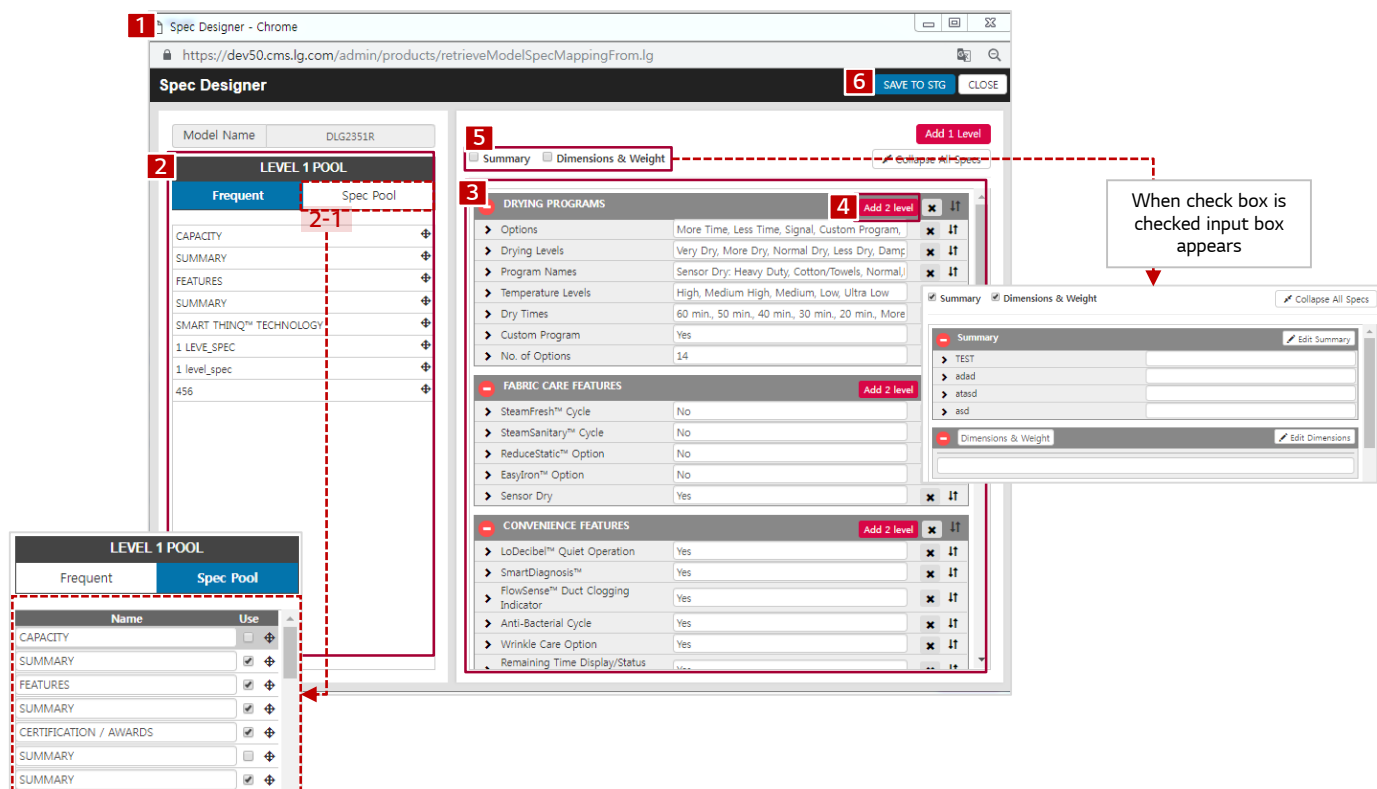
## 2.1.1.3 Spec Designer PopUp

## Definition

Popup opened when clicking on Status(Spec Assign/Need Assigned) of Spec Assign cell from model search result  
If spec is not registered for model – Status is set as "Need Assigned".

In this popup(Spec Designer) level 2 spec can be added and model summary can be input

## Explanation



- ① Spec Designer Popup
  - Spec Designer pops up by clicking on Spec Assign status
  - Spec information of the model can be registered and modified
- ② Level 1 / Level 2 Pool Area
  - Initially Frequent spec of Level 1 is shown.
  - Specs can be moved by drag & dropping the arrow on the right side of each spec.

2-1. Spec Pool Tab click  
Specs are displayed, use flag of each spec can be selected.  
"Edit" button is provided for Level 2 Spec Pool Tab (See next page for further details)
- ③ Front Display Edit Screen
  - Summary and Dimensions & Weight will be displayed at default. To hide Summary and Dimensions & Weight, uncheck the Use checkbox.
  - Click "Edit Summary" and "Edit Dimensions" to edit settings in the Edit Pop-up.
  - Click "Add 2 level" to display LEVEL 2 POOL. Select and Drag & drop arrow keys to the right to
- ④ LEVEL 2 POOL will be displayed(See next page for further details).
- ⑤ Summary/Dimensions & Weight Checkbox
  - Once checked, an input box to input/modify summary/dimension & weight appears(See next page for further details)
- ⑥ SAVE TO STG
  - Once clicked Spec data registered/modified is saved on STG.



## 2.1 Model

## 2.1.1 Model Management

## 2.1.1.3 Spec Designer Popup

## Explanation(continued)

**LEVEL 2 POOL**

Frequent Spec Pool

Programs (Sensor Dry) Programs (Manual Dry) No. of Options Options Temperature Settings Drying Levels Manual Dry Times

**LEVEL 2 POOL**

Frequent Spec Pool

Name	Use	Edit
No. of Programs	<input checked="" type="checkbox"/>	Edit
Programs (Sensor Dry)	<input checked="" type="checkbox"/>	Edit
Programs (Manual Dry)	<input checked="" type="checkbox"/>	Edit
No. of Options	<input checked="" type="checkbox"/>	Edit
Options	<input checked="" type="checkbox"/>	Edit
Temperature Settings	<input checked="" type="checkbox"/>	Edit
Drying Levels	<input checked="" type="checkbox"/>	Edit
Manual Dry Times	<input checked="" type="checkbox"/>	Edit
Signal Volume Level	<input checked="" type="checkbox"/>	Edit
Program Names	<input checked="" type="checkbox"/>	Edit
Temperature Levels	<input checked="" type="checkbox"/>	Edit
Dry Times	<input checked="" type="checkbox"/>	Edit
Custom Program	<input checked="" type="checkbox"/>	Edit

ADD CANCEL SAVE TO STG

**Spec Value Manage**

Spec Value	User Flag
60 min, 50 min, 40 min, 30 min, 20 min, More Time/Less Time	<input checked="" type="checkbox"/>
60 min, 50 min, 40 min, 30 min, 20 min	<input checked="" type="checkbox"/>
60 min, 50 min, 40 min, 30 min, 20 min	<input checked="" type="checkbox"/>
More Time, Less Time	<input checked="" type="checkbox"/>

NEW SAVE TO STG CLOSE

**Summary**

TEST

adad

atad

asd

**Dimensions & Weight**

**DRYING PROGRAMS**

Options More Time, Less Time, Signal, Custom Program

Drying Levels Very Dry, More Dry, Normal Dry, Less Dry, Damp

Program Names Sensor Dry: Heavy Duty, Cotton/Towels, Normal

Temperature Levels High, Medium High, Medium, Low, Ultra Low

Dry Times 60 min, 50 min, 40 min, 30 min, 20 min, More

Custom Program Yes

No. of Options 14

**FABRIC CARE FEATURES**

SteamFresh™ Cycle No

SteamSanitary™ Cycle No

ReduceStatic™ Option No

EasyIron™ Option No

**Edit Summary**

Spec Summary Name	Order
Summary	
TEST	1
TEST1	2
TEST2	3
TEST3	4

SAVE TO STG CLOSE

**dimensions & weight manage**

Model Name	PC Image	Mobile Image	AB Text	Contents	Select
DUEX950V			The LG DUEX950V is a twenty-nine inches wide and 40 inches high and four-fifths inches high.	test	Select
WTT7000HA			The LG WTT7000HA is a twenty-nine inches wide and 40 inches high and four-fifths inches high.		Select
WAE500HA			The LG WAE500HA is a twenty-nine inches wide and 40 inches high and four-fifths inches high.		Select
DUEX7000H			The LG DUEX7000H is a twenty-nine inches wide and 40 inches high and four-fifths inches high.	test	Select

NEW SAVE TO STG CLOSE

- ① Level 1 / Level 2 Pool Area  
- Not usable spec are disabled on Frequent Tab of Level Pool의 Frequent Tab.
- ② Level Spec Tab  
- Spec can be moved by drag & dropping the arrow on the right side of the spec.  
- New row is added by clicking on ADD button, where you can register a new spec.  
2-1. EDIT button  
"Spec Value Manage Layer Popup" opens where you can add/modify spec value
- ③ Spec Value Manage Layer Popup  
- Registered spec value can be modified and use flag can be changed  
- By clicking NEW button a row is added to register a new value.
- ④ Edit Summary button  
- Once clicked a "Edit Summary Layer Popup" is provided where you can change Summary Name and order.
- ⑤ Edit dimensions button  
- Once clicked, "dimensions & weight manage Layer Popup" opens where dimensions can be modified.  
- By clicking on Select button corresponding dimensions information is selected.  
- Registered image can be changed by clicking on Edit Image button.  
- A row is added by clicking "NEW" button. New dimension image can be registered.  
- Registered/modified information is save on STG by clicking SAVE TO STG button.



## 2.1 Model

## 2.1.1 Model Management

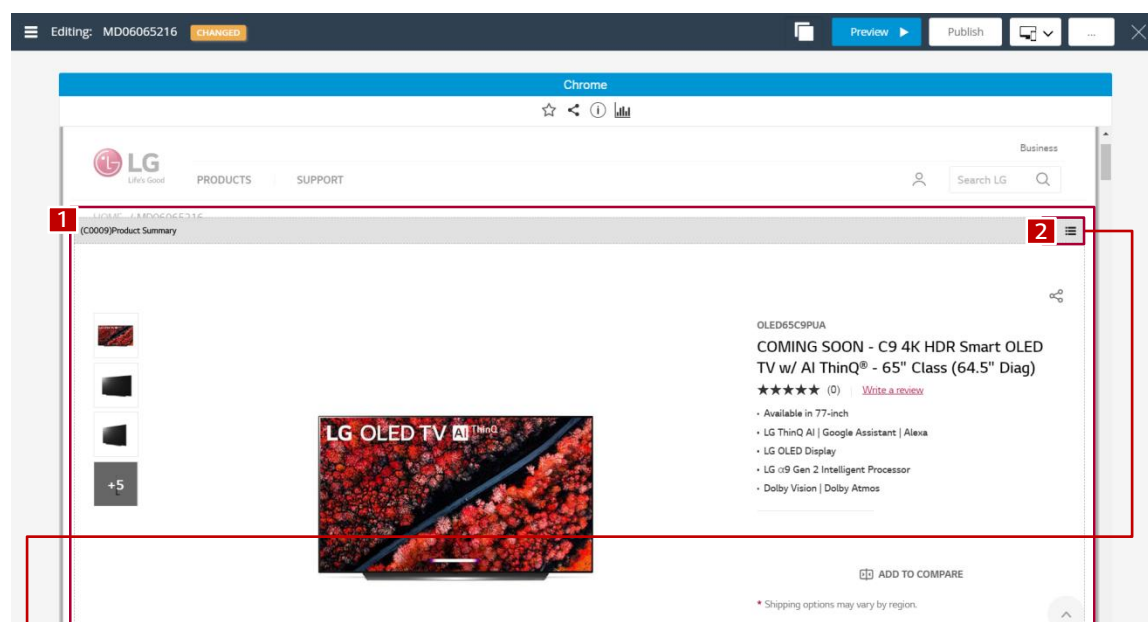
## 2.1.1.4 Web Contents Edit

## Definition

Menu Contents : Model information such as User Friendly Product Name, Brand Type, Release Date , Bullet Feature, Basic Image, Gallery Image, Video can be modified.

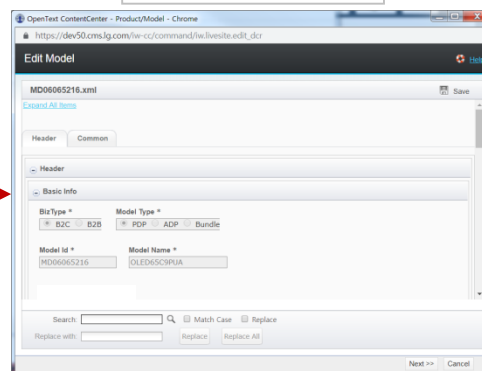
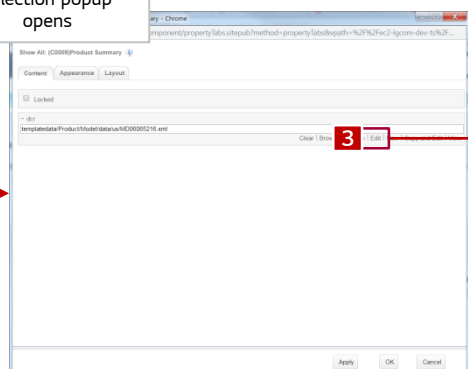
Contents displayed on Model Page can be modified using WCMS.

## Explanation



When clicked  
Model DCR  
selection popup  
opens

When clicked Edit Model  
popup opens



- ① Product Summary (GPC0009 Component)
- ② Component Edit Menu  
- Once clicked a popup to select Model DCR is opened
- ③ DCR Edit button  
- Once clicked Edit Model(DCR Template) pops up where you can edit Brand Type, User Friendly Product Name, Release Date.



2.1 Model

- 2.1.1 Model Management
- 2.1.1.5 Model DCR

Explanation(continued)

OpenText ContentCenter - Product/Model - Chrome

dev50.cms.lg.com/iw-cc/command/iw.livesite.edit\_dcr

Edit Model

MD07510481.xml

Expand All Items

Header Common

Header

1 Basic Info

BizType \* Model Type \*

☐ B2C ☒ B2B ☒ PDP ☐ ADP ☐ Bundle ☐ OBS Bundle

Model Id \* Model Name \*

MD07510481 65EP5G

User Friendly Product Name \*

UltraFine Display OLED Pro

This input field covers the features such as size, color, shape, type, form etc (e.g. 55" Black OLED TV). And please never use "LG" in that field.

Release Date

2021-01-29 Calendar

OBS Pre-Order Disclaimer 1-1

The Disclaimer can be up to 180 characters.It is used only for pre-order models.

2 Bullet Features

Bullet Feature - 3 items

1

Bullet Feature \*

Accurate Picture Quality with a Wide OLED Screen

2

Bullet Feature \*

Jack Interfaces for Professional (SDI, etc.)

UI example on the web

1 LG GX 55 inch Class with Gallery Design 4K Smart OLED TV w/AI ThinQ™ (64.5" Diag)

2

Gallery Design

- Self-Lighting OLED Perfect Black, Infinite Color, Infinite Contrast
- α9 Gen 3 AI Processor 4K with AI Picture Pro & AI Sound Pro
- Dolby Vision IQ and Dolby Atmos
- webOS 5.0 ThinQ AI for smart home voice control

77" 65" 55"

\$2,499.99

Product Price

Pre-order period : 2021-01-01 ~ 2021-01-31

Shipment will start from 2021-02-15 in order

Free delivery

Secure payment

1-1

This product is provided to customers at competitive prices by securing stock through pre-order for a limited time. As a product, delivery will start from 03/01/2021

PRE-ORDER

WHERE TO BUY

ADD TO COMPARE

- ① Basic Info : 4 items (Biz Type, Model Type, Model Id, Model Name) are only for reference and cannot be modified since they are registered in Admin. Brand Type, User Friendly Product Name, Release Date can be modified.
- 1.1 OBS Pre-Order Disclaimer : **It is used only for pre-order status.**
  - \* Move to 'SIGNATURE Brand Flag' Model Basic info pop up. (Refer. 22 Page-Number 17 )
- ② Bullet Feature : Maximum of 6 Bullet Feature can be registered.



## 2.1 Model

## 2.1.1 Model Management

## 2.1.1.5 Model DCR

## Explanation(continued)

**1** BasicImages

Basic Images Conversion

Small Image \*

/us/images/tvs/md06065216/md06065216-260x260.jpg Browse Upload Image

Medium Image \*

/us/images/tvs/md06065216/md06065216-350x350.jpg Browse Upload Image

Large Image

/us/images/tvs/md06065216/md06065216-450x450.jpg Browse Upload Image

Alt Text

**2** Thumbnail Animation Images Conversion

Thumbnail Animation Images - 1 item

\*Images will be displayed on the product list page in the order of registration.

Thumbnail Animation Images - 1

Medium/Desktop) \*

/us/images/tvs/md06065216/thumbnail/medium02.jpg Browse Upload Image

Small(Mobile) \*

/us/images/tvs/md06065216/thumbnail/small02.jpg Browse Upload Image

**3** Gallery Images Conversion

GalleryImages - 9 items

GalleryImages - 1

Zoom - Desktop(1600x1062px)

/us/images/tvs/md06065216/gallery/zoom-01.jpg Browse Upload Image

Zoom - Mobile(1044x1334px)

/us/images/tvs/md06065216/gallery/mobile-01.jpg Browse Upload Image

Gallery Image - Desktop/Mobile(1100x730px) \*

/us/images/tvs/md06065216/gallery/medium01-logo.jpg Browse Upload Image

Gallery Thumbnail - Desktop/Mobile(180x180px) \*

/us/images/tvs/md06065216/gallery/180-01.jpg Browse Upload Image

When selected Image Upload Popup opens. Once image is uploaded, image is resized to appropriate sizes.

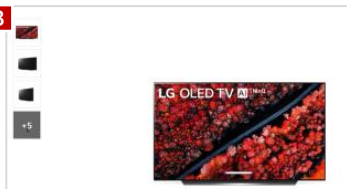
**File Upload**

Only use to Image Resource.

파일 선택 선택된 파일 열람 Upload

**UI example on the web**

**3**



- ① Basic Image : Basic image of a Model. 3 types of image(Small, Medium, Large) can be registered.
- ② Thumbnail Animation Image : Rolling image on PLP once mouse is over.
- ③ Gallery Image : Gallery image displayed on the left side of PDP (including Zoom Image).

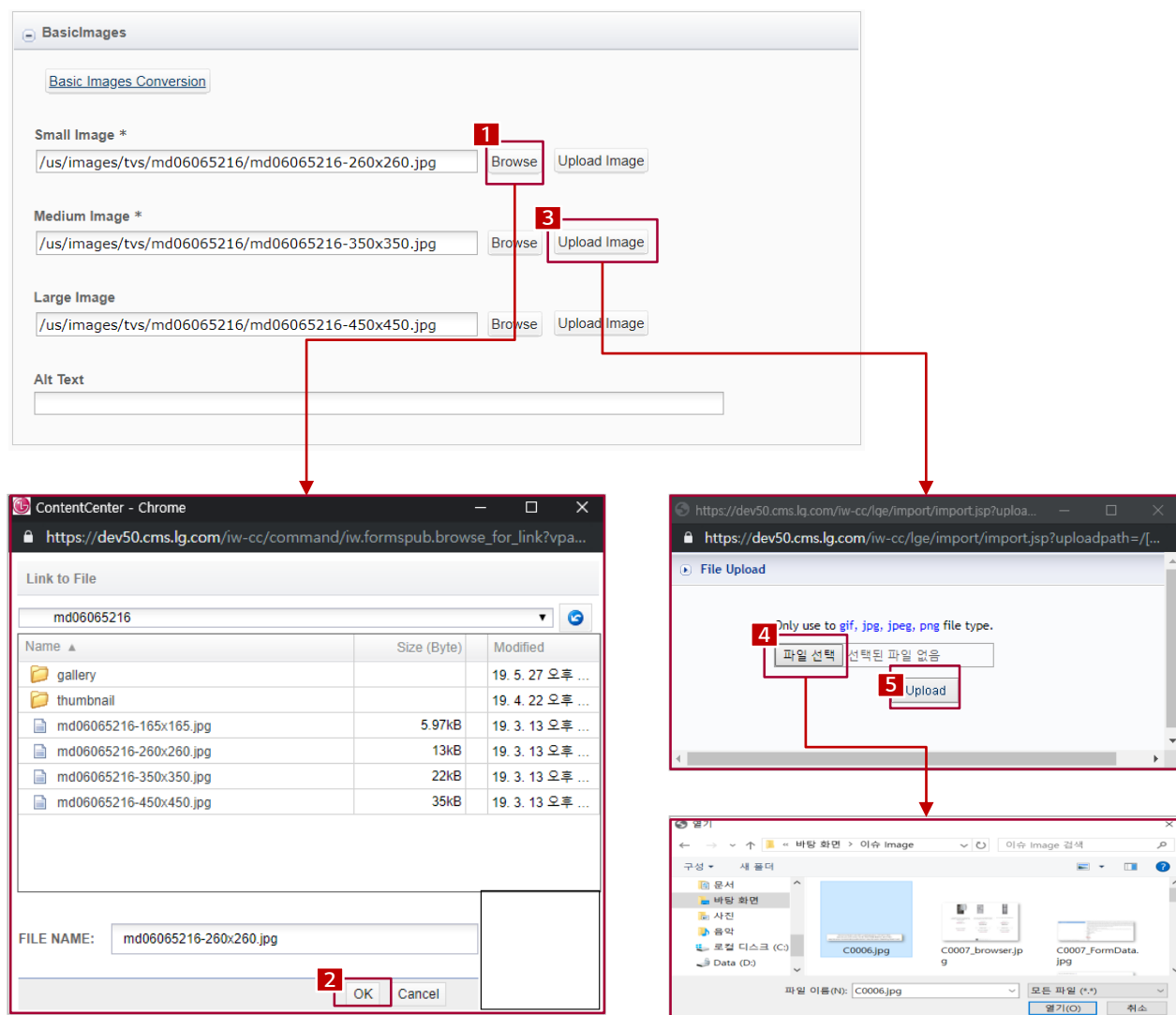


## 2.1 Model

## 2.1.1 Model Management

## 2.1.1.5 Model DCR

## Explanation(continued)



- ① When you click the Browse button, a popup window appears to select a directory or an image.
- ② Click OK after selecting an image to be changed.
- ③ Click Upload Image, and the Image Upload popup window appears.
- ④ When you click a button to select a file, a popup window to select a local image appears.
- ⑤ After selecting an image to be changed, click the Upload button.



2.1 Model

- 2.1.1 Model Management
- 2.1.1.5 Model DCR

Explanation(continued)

1

360 Images (Desktop Only) - 1 Item

360 Images (Desktop Only) - 1

360 Image URL \*

360 Image Title

2

Related Video

Video Info - 1 Item

Video Info - 1

Video Name \*

LG Door-in-Door

Select a Video List...

Video Thumbnail Image \*

Browse

Upload Image

VideoTypeCode

BRTCV

Video Type

BrightCove

Video Id

1766152406001

Video Desc

LG Door-in-Door

When clicked list of videos registered in Video Pool pops up. By selecting a video in the pool it is automatically registered in Video info.  
\* Video Thumbnail Image is not registered in this flow

Select Promotion - Chrome

http://dev50.cms.lg.com/admin/wcms/retrieve/videoManagePopup.lg

Video Type

YouTube

Video ID

Video Name

SEARCH

Video Name	Video ID	Description	Preview
QLED Tv	89a8b77a7a2a0a9e1d&v=Qmodel	QLED Tv	PREVIEW
StayGCurRM	StayGCurRM	StayGCurRM	PREVIEW
Measure Twice, Order Once	StayGCurRM	StayGCurRM	PREVIEW
Measure Twice, Order Once	StayGCurRM	StayGCurRM	PREVIEW
Nano IPS	NanoIPS_yeah?		PREVIEW
Nano IPS	NanoIPS_yeah?		PREVIEW
LG 17Z990: LG gram 17" Ultra-Lightweight Laptop with Intel® Core™ i7	79hAC9G664	Deliver necessary portability with uncompromising features on the new	PREVIEW
LG 14T2990: LG gram 14" 2-in-1 Ultra-Lightweight Laptop	F9hL2990	Work meets creativity in a variety of ways on the new LG gram 14-inch 2-	PREVIEW
LG Full Array Local Dimming	65DnaMRu0Q	LG Full Array Local Dimming	PREVIEW

Network time: 111ms

Data fetch time: 12ms

Grid render time: 14ms

Total time: 137ms

SELECT

UI example on the web

- ① 360 Images : 360 Image placed on the very top of PDP Model Gallery list can be registered.
- ② Related Video : Video placed on 2<sup>nd</sup> of PDP Model Gallery list can be registered (Maximum 2).
- Brightcove or YouTube video can be selected from Video Pool.

COPYRIGHT © 2020 LG CNS CO., LTD., ALL RIGHTS RESERVED.

18

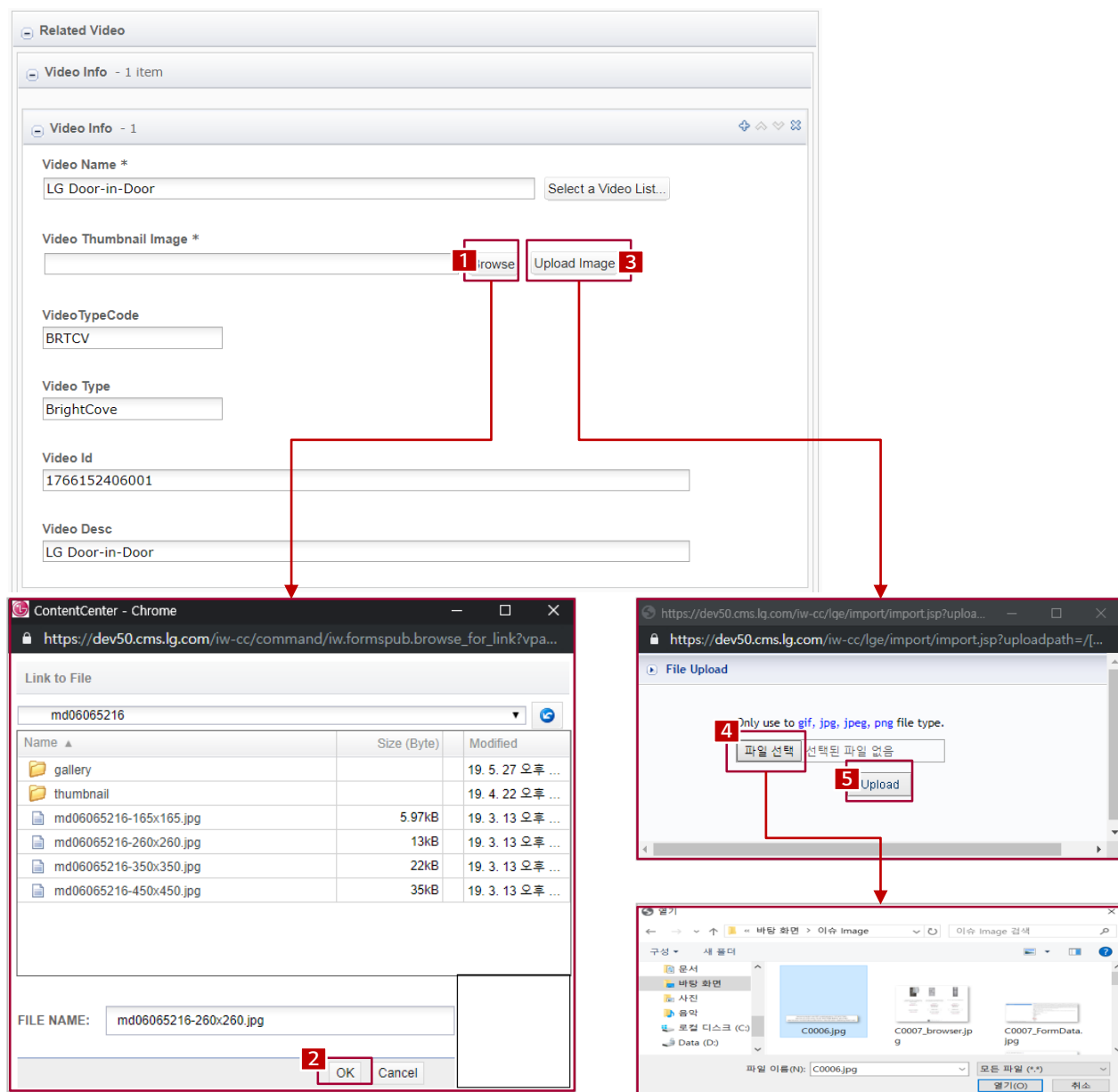


## 2.1 Model

## 2.1.1 Model Management

## 2.1.1.5 Model DCR

## Explanation(continued)



- ① When you click Browse button, a popup window to select a directory or an image appears.
- ② After selecting an image to be changed, click OK button.
- ③ When you click the Upload Image, an Image Upload popup window appears.
- ④ When you click a button to select a file, a popup window to select images from your local computer appears.
- ⑤ After selecting an image to be changed, click Upload button.



2.1 Model

- 2.1.1 Model Management
- 2.1.1.5 Model DCR

Explanation(continued)

1

Bundle Information

Bundle PLP Display Flag \*

No

Bundle Image !

Browse

Upload Image

This is a required field

Bundle Image(Mobile) !

Browse

Upload Image

This is a required field

Alt Text

Description !

This is a required field

2

Bundle Models

Select Bundle...

Bundle Model - 1 Item

Bundle Model - 1

Model ID \*

MD05753647

Model Name \*

WM9000HWA\_WD200CW\_DLEX9000W\_WDP5W

When you click Bundle model, a search popup window appears to search Bundles registered in Admin. Once selected information is set automatically.

Select Model - Chrome

https://ide9b.cms.lg.com/virtual/www/reviewModelPopup.js?uiType=ECI\_AboutCade=CF0AmodelB=8&modelType=8&item=

Category

Choose a state

Choose a state

Choose a state

SEARCH

Select Model

Model Name

Super Category

Category

Sub-Category

Model ID

Sales Model

Model Name

Refrigerance

Washers

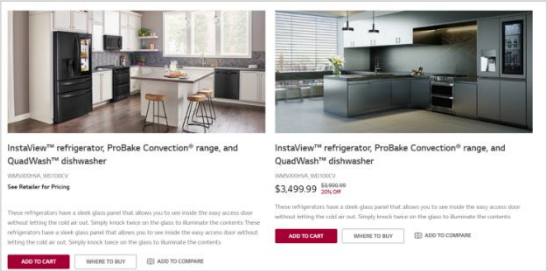
Twin Load Washers

MD00753647

TR00000A-LANVEL

YH00000HWA\_WD200

UI example on the web



Front – Bundle Information



Front – Bundle Model

- ① Bundle Information : This bundle information is shown only when Model Type is Add-on Bundle. Bundle PLP Display Flag, Bundle Image, Description can be registered. Bundle Product List(C0021) uses Image and Description registered. Tick Bundle PLP Display Flag “Yes” in case you wish to show Bundle product on Product List.
- ② Bundle Model : Bundle Model can be added by searching Bundle Models registered in Admin. Registered Bundle Models are shown on PDP overview as the first Component(C0012).



## 2.1 Model

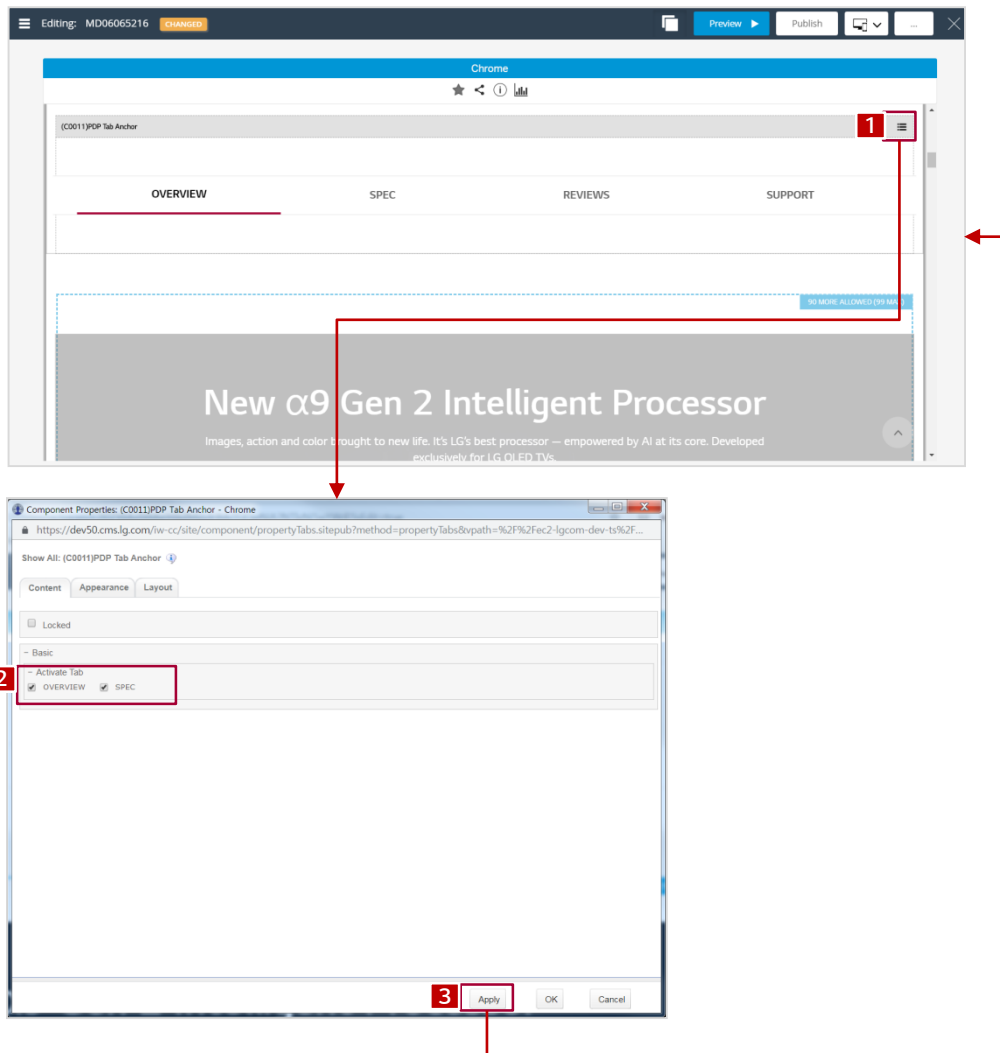
### 2.1.1 Model Management

#### 2.1.1.6 PDP Tab Anchor

## Definition

You can select whether to display or not display Tab Anchor(Overview, Spec) on PDP.

## Explanation



- ① Component Property menu
  - "(C0011)PDP Tab Anchor" Component Property popup opens when clicking on the hamburger icon
  - Display values can be set for the Component
- ② Activate Tab
  - Display values can be set for Overview, Spec Tab.
- ③ Apply Button
  - When selected, the selected value will be applied to the "(C0011)PDP Tab Anchor". If the Overview and Spec value is not selected at [2], the unselected value will not be displayed on the anchor tab.