

## Pro:Centric Server (PCS100R)



The PCS100R is a stand-alone Linux data server that manages and controls the Pro:Centric system, delivering unique digital content from the head-end to the hotels' guest rooms via the RF distribution network. It supports a data carousel of applications and services and broadcasts these to Pro:Centric enabled TVs over a preconfigured communications channel, enabling guests to select customized content for in-room viewing using the TV remote control, such as hotel amenities, daily weather, and the channel programming guide. The PCS100R can be used with both Free-To-Guest (FTG) and Pay-Per-View (PPV) head-end systems.

The server captures data from the Internet and formats it within display pages, and outputs the pages in DTV format over the Asynchronous Serial Interface (ASI) output. With appropriate modulation and up-conversion, this ASI signal can then be used for either IP or RF distribution in a lodging site application.

#### SIMPLE INSTALLATION

Uses the existing RF network, internet connection input, ASI output, and conversion for RF delivery

#### MINIMAL HEAD-END RACK-SPACE

Small, lightweight chassis, 1U height profile, 19-inch rack-mountable

#### RAPID CONTENT CREATION

Using Web Editor/Content Wizard Tool to quickly create and edit hotel-branded content

#### REMOTE SUPPORT

Remote administration, configuration, and maintenance via VPN server



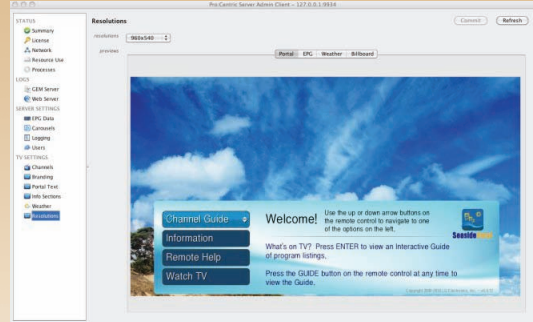
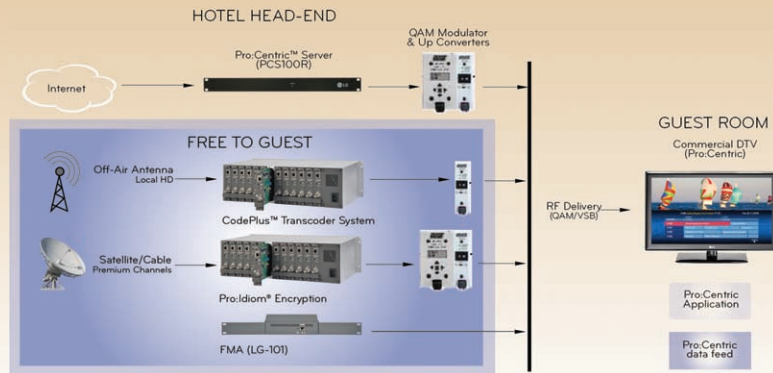
**SERVER ADMIN CLIENT**

An Admin Client Graphical User Interface (GUI) is provided and is accessible via the Internet or VPN Server using a standard web browser, to provide System Integrator administration users with a full suite of features to manage and support the Pro:Centric system, including:

- System status and logs, and server settings
- Configuration for Channel Guide lineup
- Hotel branding and Billboard creation and editing.

Two user profiles are supported: Standard User and Administration User, governing menu access by function.

For further details, refer to the **Pro:Centric™ Server Admin Client User Guide, P/N: 206-4143**, (also accessible on the system).

**TYPICAL FTG Pro:Centric PCS100R INSTALLATION****Pro:Centric VPN SERVER**

Remote management of the PCS100R server functionality is provided via a secure, built-in VPN client that connects to the centralized VPN server. In this way, remote configuration management, remote software updates and other services are supported. Free hosting of the service is provided by LGE during the warranty period. Extended support plans are available.

**INSTALLATION REQUIREMENTS:**

Installation of the PCS100R requires the following:

- 3U rack space in the Head-end room: 1U for the PCS100R, and 2U for the Modulator / Up-Converter rack).
- Ethernet Connection (VPN and FTP open).
- 2 x 110/120VAC power outlets.
- 1 coax drop to the RF combiner to feed the output of the Up-converter into the RF network.

Note that no local monitor or keyboard is required for the server.

For further details on the Server installation, refer to the **Installation & Setup Guide, Part No: 206-4142**.

**SYSTEM SOFTWARE**

Linux OS kernel  
Java for PPC Sun JRE  
Globally Executable MHP (GEM) server applications

**DIMENSIONS**

Unit Dimensions (W×H×D) 19.0" x 1.7" x 8.5"  
Unit Weight 2.70 lbs.

**ENVIRONMENTAL STORAGE CONDITIONS**

Operating Temperature -4° to 158° Fahrenheit (-20° to 70° Celsius)  
Humidity 95% Non-condensing

**ENVIRONMENTAL OPERATING CONDITIONS**

Operating Temperature 32° to 95° Fahrenheit (0° to 35° Celsius)  
Humidity 95% Non-condensing

**ELECTRICAL**

DC Input +12V DC @ 5 Amps  
Impedance at ASI Out Jack 75 ohms  
Level at ASI Out Jack 800 mv  
Ethernet 10/100/1000BaseT  
RS-232 DB-9 Command Line Interface port

**WARRANTY**

Limited Warranty (Parts/Labor) 1 Year  
UPC Code 7 19192 90037 0

**REGULATORY COMPLIANCE** FCC, RoHS, UL

LG Electronics U.S.A., Inc.  
Commercial Displays Group  
2000 Millbrook Drive  
Lincolnshire, IL 60069

Customer Service: 888.865.3026  
www.LGolutions.com/support

Contact your LG Regional Sales Representative:  
Hospitality: 800.228.1236  
Vertical Markets: 800.897.8788  
Channel: 800.897.8871  
Healthcare: 877.793.6484

Customer Service: 888.865.3026  
E-mail: info@LGolutions.com

SPEC\_PCS100R\_081001\_PR

**Pro:Centric.**

All screen images are simulated. Dimensions and weights are approximate. Design, features and specifications subject to change without notice.

© Copyright 2011 LG Electronics USA, Inc. All Rights Reserved. "LG Life's Good" is a registered trademark of LG Corp. Pro:Centric is a trademark of LG Electronics Inc. All other product and brand names are trademarks or registered trademarks of their respective companies.

Printed in the USA. February 2011

www.LGolutions.com

